

# Bonhams



## California Jewels

Los Angeles | June 11, 2019



# California Jewels

Los Angeles | Tuesday June 11, 2019, at 10am

## BONHAMS

7601 West Sunset Blvd,  
Los Angeles, CA 90046  
[bonhams.com](http://bonhams.com)

## SALE

Session 1: 10am-1pm  
Lots 1-200  
Session 2: 2pm-end,  
Lots 201-385

## PREVIEW

### Los Angeles

Friday, June 7, 12pm to 5pm  
Saturday, June 8, 12pm to 5pm  
Sunday, June 9, 12pm to 5pm  
Monday, June 10, 12pm to 5pm

## SALE NUMBER:

25330

## CATALOG:

\$35.00

## ILLUSTRATIONS

Front cover: Lots 379 and 383  
Back cover: Lot 119

## BIDS

+1 (323) 850 7500  
+1 (323) 850 6090 fax  
Email: [bids.us@bonhams.com](mailto:bids.us@bonhams.com)  
To bid via the internet please visit  
[www.bonhams.com](http://www.bonhams.com)

## Telephone bidding

Bidding by telephone will only  
be accepted on a lot with a low  
estimate in excess of \$1000.

Please note that bids should be  
submitted no later than 4pm on  
the day prior to the sale. New  
bidders must also provide proof  
of identity when submitting bids.  
Failure to do this may result in your  
bid not being processed.

## Live online bidding is available for this sale

Please email [bids@bonhams.com](mailto:bids@bonhams.com)  
with 'live bidding' in the subject  
line 48 hours before the auction  
to register for this service.

## INQUIRIES

### Los Angeles

Alexis Vourvoulis, GG  
Specialist  
Emily Waterfall  
Specialist  
Kelly Sitek, GG  
Cataloger

### Administrator

Alexandra Schettini  
[alexandra.schettini@bonhams.com](mailto:alexandra.schettini@bonhams.com)  
+1 (323) 436 5508

### Jean Ghika

Global Head of Jewelry  
[jean.ghika@bonhams.com](mailto:jean.ghika@bonhams.com)  
+44 207 468 8282

### New York

Brett O'Connor, Senior  
International Jewelry Director  
Caroline Morrissey,  
Head of Sales, US Jewelry  
Leslie Roskind  
Senior Specialist  
+1 212 461 6526

### San Francisco

Shannon Beck, GG  
Senior Specialist  
+1 (415) 503 3306

## CLIENT SERVICES

Monday to Friday 9am to 5pm  
+1 (323) 850 7500  
+1 (323) 850 6090 Fax

Please see pages 117 to 119 for  
bidder information including  
Conditions of Sale, after-sale  
collection and shipment.

Please note that irrespective  
of origin, jadeite and rubies (and  
any jewelry pieces that contain  
them) may now be imported into  
the United States.

## REGISTRATION IMPORTANT NOTICE

Please note that all customers,  
irrespective of any previous activity  
with Bonhams, are required to  
complete the Bidder Registration  
Form in advance of the sale. The  
form can be found at the back  
of every catalogue and on our  
website at [www.bonhams.com](http://www.bonhams.com)  
and should be returned by email or  
post to the specialist department  
or to the bids department at  
[bids.us@bonhams.com](mailto:bids.us@bonhams.com)

To bid live online and / or  
leave internet bids please go to  
[www.bonhams.com/auctions/25330](http://www.bonhams.com/auctions/25330)  
and click on the Register to bid link  
at the top left of the page.

## IMPORTANT NAMES & NOTICES

### DIAMONDS, COLORED STONES & PEARLS

The Jewelry department of Bonhams & Butterfields recognizes that there are many various forms of treatments and enhancements used in diamonds and colored stones in order to improve their appearance and or color. Techniques such as heat treatment have been used to improve the color and transparency of both sapphires and rubies in addition to other gemstones. Techniques such as oiling have been used to enhance the clarity of emeralds while dying has been used to effect the color of jade. Techniques such as heat treatment, oiling, resin impregnation, irradiation, color diffusion, dying, fracture filling, and HTHP are just a few off the techniques that are in use today. Prospective buyers are therefore reminded that unless otherwise noted in our catalog description it must be assumed that some form of enhancement may have been used and that such treatment may not always be permanent or detectable and that our estimates have taken such possibilities into account. As a matter of policy, Bonhams & Butterfields endeavors to obtain certificates from recognized gemological laboratories when such certificates are deemed crucial to the authenticity of a gemstone. It is not possible however to gain certificates for all items offered for sale and it is therefore recommended where there is no mention of a certificate that all prospective buyers consult with one of our department specialists prior to purchase of such items.

PLEASE NOTE: A number of laboratories issue certificates that give more detailed descriptions of gemstones, however there may not be consensus between different laboratories on the degrees, or types of treatment for any particular gemstone. Neither is there necessarily consensus between different laboratories, or private appraisers, on the grading of diamonds. All gemstone weights are approximations only and although an independent laboratory grading may be used in the catalog text, we cannot guarantee such gradings.

Images shown may appear smaller or larger than actual size.

Although we endeavor to mention in our descriptions significant defects, needed repairs, absent stones and the like, **WE DO NOT GUARANTEE THAT THE DESCRIPTIONS ARE COMPREHENSIVE.** Please examine all lots carefully. It is the responsibility of the prospective bidder, or his agent, to determine the condition of lots during the preview. Condition reports have been created for most lots in this auction, and are available upon request. Please contact the Jewelry department at least two days prior to the sale date for additional information.

It is the responsibility of the buyer to investigate any applicable restrictions on purchased property and to obtain any export or import licenses and/or certificates as well as any other required documentation before shipping. The buyer's inability to export or import any such items or to do so timely shall not serve as the basis for any cancellation or rescission of the sale or any delay in payment. Prospective buyers who are uncertain as to whether a lot is subject to these restrictions or any other restrictions on importation or exportation are advised to consult with the specialist department in which the property is offered.

### REGULATED SPECIES MATERIALS AND CITES PERMITS

The export of a lot from the United States or import into certain countries may be subject to export or import regulations, licensure and/or other restrictions; in particular, lots containing plant or animal materials such as ivory, rhinoceros horn, tortoiseshell, coral, whalebone or certain types of woods, irrespective of age or value, may require the granting of one or more export or import licenses or certificates, or may be banned from import altogether by some countries. Moreover, the ability to obtain an export license or certificate does not insure the ability to obtain an import license or certificate in another country. Lots that contain such regulated species materials may also not be eligible for exportation or for re-importation into the United States if they are not at least 100 years of age, and, under current law, lots containing African Elephant Ivory may no longer be re-imported into the United States regardless of age. In addition, resales of lots containing certain regulated species materials may be subject to restrictions in some jurisdictions.

Lots noted in the catalog with a **Y** next to the lot number contain one or more such regulated plant or animal materials. **It is the buyer's responsibility to investigate any such restrictions and to obtain any relevant export or import licenses. Please note that this process is governed by local authorities and may take considerable time. Regardless of any delay in the obtaining of an export or import license or certificate or denial of a license's or certificate's issuance, purchased lots shall be paid for in accordance with the Conditions of Sale, and any such delay or denial shall not serve as the basis for cancellation of any sale.** Prospective buyers are advised to obtain information from the relevant regulatory authorities regarding export and import restrictions, requirements, and costs prior to bidding.

Prospective buyers should also check with their local (e.g. state) regulatory authorities regarding any local restrictions and/or permit requirements that may apply with respect to purchases of regulated species materials, including without limitation purchases of items containing elephant ivory or rhino horn. For example, we are advised that New York buyers of any lot containing elephant or mammoth ivory or rhino horn will be responsible for obtaining a New York State permit before taking possession of the lot within New York State, and that the State of New Jersey has banned the import of items containing elephant or marine mammal ivory or rhino horn into that state.

Upon request, Bonhams can refer the purchaser to a third party agent to assist the purchaser in attempting to obtain the appropriate licenses and/or certificates. However, there is no assurance that any necessary licenses or certificates can be obtained. Please contact the Specialist Department for a suggested list of shipping agents prior to placing a bid if you are uncertain as to whether a lot is subject to export/import license or certificate requirements or related restrictions.

### WATCHES

Although we endeavor to mention in our descriptions significant defects, needed repairs, absent stones and the like, **WE DO NOT GUARANTEE THAT THE DESCRIPTIONS ARE COMPREHENSIVE.** Please examine all watches carefully. It is the responsibility of the prospective bidder, or his agent, to determine the condition of watches during the preview. Except as expressly set forth in the Conditions of Sale, all watches are sold "as is". We do not guarantee the accuracy or operation of any watch function such as timekeeping, chronograph, calendar, repeater or register.

We make no judgments as to whether diamond dials or diamond bezels originated at the factory or are later additions.

**INDEX**

**INCLUDING PROPERTY FROM**

<b>NAME</b>	<b>LOT NUMBER</b>
Angela Cummings	185, 361
Asprey	24, 30, 32, 37, 45, 48, 50, 52, 53, 55
Boucheron	83, 86, 87
Buccellati	89
Bvlgari	166, 167, 192, 337
Cartier	8, 13, 76, 98, 174, 184, 236, 267, 279
Chopard	12, 178
David Webb	374
David Yurman	291
Drayson London	70
Elizabeth Locke	1, 378
Elsa Perretti	265
Franck Muller	244
Fred	25, 41, 57, 58, 334
Garrard	37, 43, 45
Gubelin	22
Hamilton	74
Hammerman Brothers	247
Ilias LaLaounis	2, 6, 19
Jaeger-LeCoultre	88, 251
Kieselstein Cord	11
Marina B.	187, 189, 191, 329, 330
Oscar Heyman & Brothers	49, 278, 331
Piaget	101
Pomellato	169
Trabert & Hoeffler, Mauboussin	271
Rudle	79, 138
Ruser	51, 58
Schlumberger	183
Seaman Schepps	190
Shreve, Crump & Low	111
Tiffany & Co.	17, 29, 38, 102, 114, 199, 263
Van Cleef & Arpels	14, 27, 28, 33, 35, 40, 54, 56, 173
Verdura	31
Zolotas	11

Property of a Los Angeles Collector  
 Property of a Lady  
 Property of a Palm Springs Collector  
 Property from the Collection of Nicole and William M. Keck II  
 Property from a Paradise Valley Estate  
 Property of a South American Collector  
 Property of a Private San Francisco Collector  
 Property of a Lady  
 Property of a Los Angeles Collector  
 Proceeds to benefit The Echo Shop who support outreach programs in Santa Clara County







5



6



7

1  
**A CITRINE CLIP, ELIZABETH LOCKE**  
*mounted in 18k gold; dimensions: 2 1/2 x 2 1/2in.; with maker's mark*

**\$3,000 - 5,000**

2  
**AN EMERALD, SAPPHIRE AND RUBY RING, ILIAS LALAOUNIS**  
*mounted in 18k gold; size: 6 1/2; signed Lalaounis with maker's marks*

**\$1,200 - 1,500**

3  
**A GOLD AND EMERALD NECKLACE**  
*mounted in 22k gold; gross weight approximately: 129 grams; length: 59in.*

**\$4,000 - 6,000**

4  
**A PAIR OF LAPIS LAZULI, PRASIOLITE AND DIAMOND PENDANT EARRINGS**  
*mounted in 18k gold; length: 3in.*

**\$1,000 - 2,000**

5<sup>Y</sup>  
**A CORAL, LAPIS LAZULI AND DIAMOND RING**  
*mounted in 18k gold; size: 6 1/2*

**\$1,500 - 2,000**

6  
**A SAPPHIRE, RUBY AND DIAMOND BROOCH, ILIAS LALAOUNIS**  
*mounted in 18k bi-color gold; gross weight approximately: 30 grams; dimensions: 2 3/5 x 1 3/4in.; signed Ilias LaLaounis with maker's mark*

**\$2,000 - 3,000**

7  
**A TRIPLE STRAND GOLD BRACELET**  
*18k gold; gross weight approximately: 107 grams; length: 7in.*

**\$3,000 - 5,000**



8

8  
**A GOLD 'LA DONA' BRACELET WRISTWATCH, CARTIER**  
 quartz movement; 18k gold; gross weight approximately: 121 grams; case width: 22mm; length: 5 3/4in.; case, dial and movement signed, numbered 87735LX and 2904

**\$6,500 - 7,500**

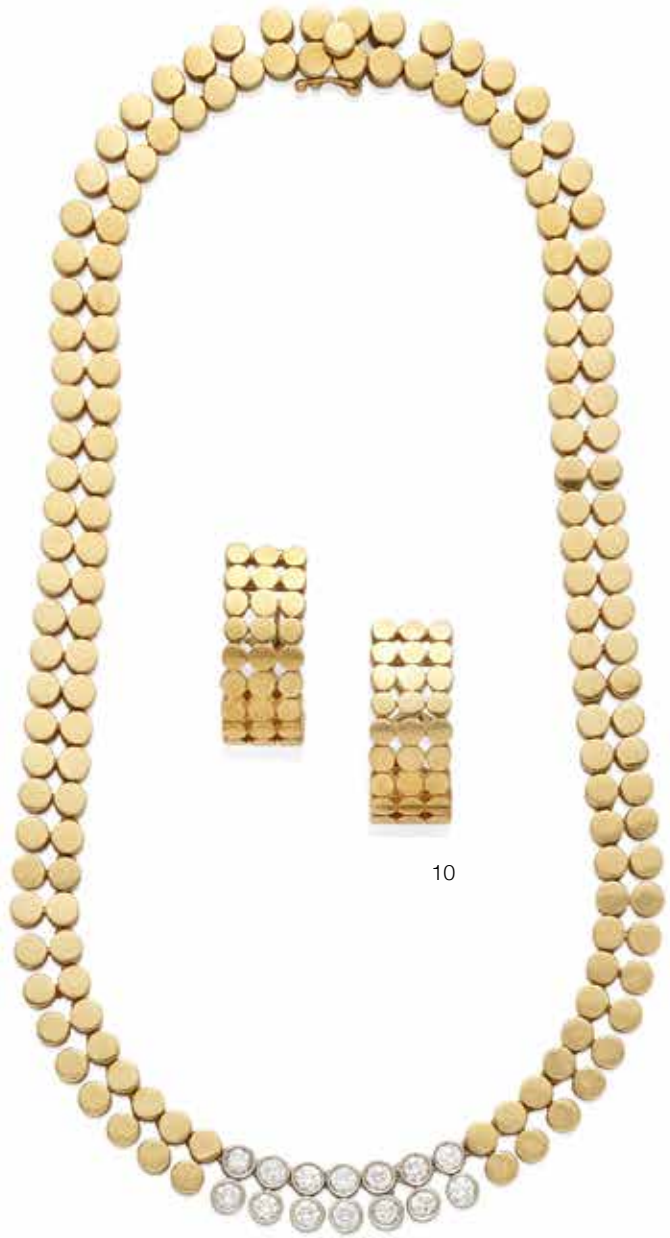


9

**PROPERTY OF A PALM SPRINGS COLLECTOR**

9  
**A PAIR OF GOLD EAR CLIPS BY TIFFANY & CO. WITH A DIAMOND RING**  
 mounted in 18k gold; estimated total diamond weight: 2.20cts; ear clip dimensions: 7/8 x 3/4in.; ring size: 5 3/4 (hinged shank); ear clips signed Tiffany & Co., 1998

**\$2,000 - 3,000**



10

10  
**A DIAMOND NECKLACE TOGETHER WITH A PAIR OF GOLD EAR CLIPS**  
 mounted in 18k gold; estimated total diamond weight: 2.00cts; gross weight approximately: 98 grams; necklace length: 15in.; ear clip dimensions: 1 x 3/8in.

**\$2,000 - 3,000**  
**To be sold without reserve**





11  
**A GOLD HINGED BANGLE WITH A GOLD RING, ZOLOTAS AND KIESELSTEIN CORD**  
*18k and 22k gold; weighing approximately: 39 grams; bracelet diameter: 2 1/2in.; ring size: 5 1/2; bracelet signed Zolotas with maker's mark, ring signed Kieselstein Cord*  
**\$1,200 - 1,800**

12  
**A 'HAPPY DIAMOND' BRACELET, CHOPARD**  
*mounted in 18k gold; estimated total diamond weight: 1.05cts; gross weight approximately: 29 grams; length: 7in.; signed Chopard*  
**\$1,500 - 2,000**

13  
**A GOLD 'MAILLON PANTHERE' BRACELET, CARTIER**  
*18k gold; weighing approximately: 48 grams; length: 7 1/2in.; signed Cartier, no. 68569; with signed box*  
**\$4,500 - 6,500**

14  
**A TIGER'S-EYE 'LUCKY ALHAMBRA' BUTTERFLY NECKLACE, VAN CLEEF & ARPELS**  
*mounted in 18k gold; length: 19in.; signed VCA, no. JB023222*  
**\$2,000 - 3,000**

15  
**A DIAMOND SUNFLOWER NECKLACE**  
*mounted in silver and 18k gold; gross weight approximately: 25 grams; length: 20in.*  
**\$1,800 - 2,500**



17

18

19

16

16  
**A SET OF FOUR GEM-SET RINGS**  
*mounted in 14k gold, 18k gold and platinum;*  
*sizes: 4 1/4, 7, 7 and 7 3/4*  
**\$1,800 - 2,800**

18  
**AN EMERALD AND DIAMOND RING**  
*centering an oval cabochon emerald*  
*approximately: 7.69 x 6.49 x 4.42mm;*  
*mounted in 14k gold; size: 7*  
**\$1,500 - 2,000**  
 To be sold without reserve

19  
**A CULTURED PEARL AND GEM-SET BROOCH, ILIAS LALAOUNIS**  
*pearls approximately: 4.6 to 4.9mm;*  
*mounted in 18k gold; diameter: 1 3/4in.; with*  
*maker's marks*  
**\$1,500 - 2,000**

17  
**AN EMERALD AND DIAMOND BRACELET, TIFFANY & CO., FRENCH, CIRCA 1970**  
*mounted in 18k gold; estimated total*  
*diamond weight: 1.20cts; length: 7 5/8in.;*  
*signed Tiffany & Co., France*  
**\$4,000 - 6,000**



20

**20**  
**A DIAMOND BROOCH**  
*mounted in 14k bi-color gold; estimated total diamond weight: 5.00cts; gross weight approximately: 25 grams; dimensions: 2 x 7/8in.*

**\$2,500 - 3,500**



21

**21**  
**A RUBY AND DIAMOND RING**  
*mounted in 18k gold; size: 6 1/2*

**\$1,500 - 2,000**



22

**22**  
**A GOLD NECKLACE, GUBELIN**  
*18k gold; weighing approximately: 58 grams; length: 18in.; with maker's mark for Gubelin*

**\$3,500 - 5,500**



23

**23**  
**AN EMERALD AND DIAMOND RING**  
*mounted in 18k bi-color gold; size: 7 1/4*

**\$1,500 - 2,000**

# Property from the Collection of Nicole and William M. Keck II

Lots 24-58 **SOLD WITHOUT RESERVE**



William M. Keck II was the grandson of the legendary oil wildcatter, William Myron Keck, the patriarch of the family that would ultimately create one of the largest philanthropic institutions – the W.M. Keck Foundation. Known as “W.M.” to the family, Bill’s grandfather and sole namesake founded The Superior Oil Company in Coalinga, CA in 1921, which – following decades of growth – was sold to Mobil Oil in 1984. At the time of the sale, Superior Oil Company was the largest independent oil producer in the country.

Bill’s grandfather originally established seven separate foundations to further education and research in the fields of science, engineering, and social welfare. Among the numerous grants distributed over the years, the W.M. Keck Foundation may be best known for the construction of the W.M. Keck Observatory on Mauna Kea in Hawaii, and for its original funding of the programming for “Sesame Street.”

While the Keck name is attached to medical buildings and research centers, William M. Keck II preferred a more modest approach, avoiding the “naming” limelight in philanthropic endeavors. Nonetheless he served for many years on the board of the W.M. Keck Foundation and also led the W.M. Keck, Jr. Foundation, also established by his grandfather. Bill’s focus, however, steadfastly remained on the mission of the foundations.

Following Bill’s passing in 2014, Bonhams was honored to offer much of the Keck Collection at auction. Today, Bill’s wife and widow, Nicole Keck, has decided the time has come for new stewardship of the remaining collection. As philanthropy and charitable giving was so important to both Bill and Nicole, it comes as no surprise that the Keck Collection is being sold - without reserve - to benefit a wide range of charitable organizations around the world – from Los Angeles to Nepal. The proceeds will help fund diverse organizations, including Maryknoll Father and Brothers, bringing health clinics, schools and clean water to areas in Nepal; tuition aid to Harvey Mudd College students, thus adding to the existing William M. Keck II Scholarship Funds, The Julliard School of Music for tuition scholarship funds; as well as UCLA Medical Center & Jules Stein Eye Institute to benefit ongoing research.

After decades of association with the Collection of Nicole and William M. Keck II, Bonhams is honored to be a part of this latest chapter. Each new owner can enjoy these wonderful treasures knowing that the funds they generate will go to making the world a better place.



**PROPERTY FROM THE COLLECTION  
OF NICOLE AND WILLIAM M. KECK II  
LOTS 24-58**

24

**A GOLD KNOT SUITE, ASPREY**

comprising a necklace, cuff and pair of ear clips of knot design; *mounted in 18k gold; gross weight approximately: 200 grams; necklace length: 20in.; cuff diameter: 2 1/4in.; ear clip dimensions: 1 x 3/4in; with maker's mark for Asprey and English hallmarks; with signed box*

**\$5,000 - 8,000**

**To be sold without reserve**



25

27

26

25

**A DIAMOND HEART CUFF, FRED**

of flexible design applied with two heart shaped plaques set with diamonds; *mounted in 18k gold; gross weight approximately: 65 grams; diameter: 2 1/2in.; signed Fred, with maker's marks*

**\$2,000 - 3,000**

To be sold without reserve

26

**A PAIR OF CITRINE AND DIAMOND CUFFLINKS WITH A PAIR OF DIAMOND CUFFLINKS**

*mounted in 14k and 18k gold; gross weight approximately: 30 grams; cufflink diameters: 3/4 x 5/8in. and 9/16 x 9/16in.; monogrammed pair signed Ruser*

**\$2,000 - 3,000**

To be sold without reserve

27

**A COLLECTION OF FOUR GOLD KEY CHAINS, VAN CLEEF & ARPELS, FRED AND MIROSLAV BROZEK**

*18k gold; total weight: 91 grams; lengths: 4 1/8in, 5in., 5 1/4in. and 6 3/8in.; piggy bank chain signed VCA, no. CS05653; one signed Miroslav Brozek; two key chains signed Fred*

**\$2,000 - 3,000**

To be sold without reserve



28

29

30

28

**A COLLECTION OF SIX DIAMOND AND GEM-SET RINGS, VAN CLEEF & ARPELS, ASPREY AND TIFFANY & CO.**

comprising an 18k gold band signed Van Cleef & Arpels, no. CU436, a monogram signet ring with maker's mark and English hallmarks, a diamond band with maker's mark and three bands signed Tiffany & Co.; with three signed boxes; mounted in 18k gold and platinum; estimated total diamond weight: 1.75cts; gross weight approximately: 52 grams; sizes: 5 1/4 to 8 3/4

**\$2,000 - 3,000**  
To be sold without reserve

29

**A GOLD BRACELET, TIFFANY & CO.**

a flexible bracelet of woven design; mounted in 18k gold; weight approximately: 79 grams; length: 7in.; signed Tiffany

**\$2,500 - 3,500**  
To be sold without reserve

30

**A DIAMOND 'SUNFLOWER' BROOCH AND EAR CLIPS SET, ASPREY**

of sunflower design accented by diamonds; mounted in 18k gold; weight: 32 grams; brooch diameter: 1 1/4in.; ear clip diameter: 1in.; both signed Asprey, no. 1094, no.1368; with two signed boxes

**\$2,000 - 3,000**  
To be sold without reserve



31

32

31  
**A GOLD BRACELET, VERDURA**  
 of knot design; mounted in 18k gold; length:  
 6 1/2in.; signed Verdura, no. VB2672

**\$1,500 - 2,500**  
 To be sold without reserve

32  
**A DIAMOND AND GEM-SET FLOWER  
 CLUSTER SUITE, ASPREY**  
 comprising a reversible necklace, ear studs  
 and ring together with a pair of sapphire  
 and diamond ear clips; mounted in 18K  
 gold; gross weight approximately: 32 grams;  
 necklace length: 17in.; ear stud diameter:  
 3/8in. ring size: 6; ear clip diameter: 7/16in.;  
 ring and necklace signed Asprey, ear studs  
 unmarked; with four signed boxes

**\$2,500 - 3,500**  
 To be sold without reserve

33  
**A RUBY AND DIAMOND CUFFLINK  
 AND STUD DRESS SET, VAN CLEEF  
 & ARPELS**  
 comprising a pair of cufflinks and three studs  
 of floral design with monogram "W.M.K.II";  
 mounted in 18k gold; estimated total  
 diamond weight: 1.55cts; cufflink length: 1in.;  
 stud length: 9/16in.; cufflinks signed VCA,  
 CSO 5653; studs unsigned

**\$3,000 - 5,000**  
 To be sold without reserve

34  
**A PAIR OF CULTURED PEARL AND  
 DIAMOND NECKLACES AND STUD  
 EARRINGS**  
 both designed as a single strand of pearls  
 completed by a diamond ball clasp, with  
 a pair of single pearl stud earrings; pearls  
 approximately: 9.0 to 9.5mm; mounted in  
 platinum; necklace lengths: 22in. and 24in.

**\$3,000 - 5,000**  
 To be sold without reserve

35  
**A PAIR OF CITRINE AND DIAMOND  
 CUFFLINKS, VAN CLEEF & ARPELS**  
 mounted in 18k bi-color gold; dimensions:  
 15/16 x 5/8in.; signed VCA, no. BHSO 1191

**\$2,000 - 3,000**  
 To be sold without reserve





34

35

33



36

37

38

**36 AN EMERALD 'CLOVER' PENDANT NECKLACE AND EAR CLIP SET, FRENCH**

of clover design with French assay and maker's marks; *mounted in 18k gold; necklace length: 16in.; ear clip dimension: 3/4 x 3/4in.*

**\$2,000 - 3,000**  
To be sold without reserve

**37 A DIAMOND AND GEM-SET CHARM BRACELET, ASPREY & GARRARD**

comprising of eighteen assorted charms, including custom designed charms by Asprey and Asprey & Garrard; *mounted in 18k gold and 14k gold; estimated total diamond weight: 2.00cts; gross weight approximately 84 grams; length: 7 1/8in.; with maker's marks for Asprey & Garrard and English hallmarks; with signed box*

**\$3,000 - 5,000**  
To be sold without reserve

Accompanied by original Asprey rendering

**38 TWO PAIRS OF EAR CLIPS, TIFFANY & CO.**

one of abstract design and one of oval form composed of gold and nephrite; *mounted in 18k gold; gross weight approximately: 27 grams; dimensions: 1 3/16 x 7/8in. and 7/8 x 3/4in.; gold clips signed Tiffany & Co.; nephrite clips by Angela Cummings for Tiffany & Co., signed T & Co.*

**\$1,500 - 2,000**  
To be sold without reserve





39



41



43



40



42

39

**A PAIR OF COLORED DIAMOND AND DIAMOND PENDANT EARRINGS, LAREINA**

of cross design; mounted in 18k bi-color gold; estimated total diamond weight: 1.20cts; length: 1 1/2in.; signed LaReina (pink diamonds untested for origin of color)

**\$2,000 - 3,000**  
To be sold without reserve

40

**A DIAMOND DRESS SET, VAN CLEEF & ARPELS**

comprising a pair cufflinks and four studs of clover design with monogram "W.M.K.II"; mounted in platinum; estimated total diamond weight: 7.50cts; cufflink dimensions: 1 x 1/2in.; stud length: 1/2in.; signed VCA, no. C505653; with signed box

**\$5,000 - 7,000**  
To be sold without reserve

41

**A PAIR OF DIAMOND EAR CLIPS, FRED, FRENCH**

of clover design; mounted in platinum; estimated total diamond weight: 3.20cts; dimensions: 1 1/16 x 1 1/16in.; signed Fred Paris, with French assay marks; with signed box

**\$3,000 - 5,000**  
To be sold without reserve

42

**A DIAMOND BROOCH**

of snowflake design; mounted in platinum; estimated total diamond weight: 5.60cts; dimension: 1 3/4 x 1 3/4in.

**\$2,000 - 3,000**  
To be sold without reserve

43

**A DIAMOND PENDANT/BROOCH AND PENDANT EARRINGS SET, GARRARD**

circular open work plaques with fleur-de-lis designs; mounted in 18k white gold; estimated total diamond weight: 2.60cts; pendant length: 1 5/8in.; earring length: 1 3/8in.; with maker's mark; accompanied by signed boxes

**\$2,000 - 3,000**  
To be sold without reserve



45

46

44

47

44

**A DIAMOND AND ROCK CRYSTAL DRESS SET**

comprising a pair of cufflinks, three studs and four buttons; *mounted in platinum and 14k gold; cufflink dimensions: 5/8 x 1/2in.; button dimensions: 9/16 x 9/16in.; stud dimensions: 5/16 x 5/16in.*

**\$2,000 - 2,500**

**To be sold without reserve**

45

**AN AQUAMARINE AND DIAMOND 'WILD ROSE' NECKLACE AND STUD EARRINGS SET, ASPREY & GARRARD**

of floral design with aquamarine petals and diamond centers; *mounted in 18k white gold; necklace length: 16in.; ear stud diameter: 9/16in.; signed with maker's mark for Asprey & Garrard; with two signed boxes*

**\$3,000 - 5,000**

**To be sold without reserve**

46

**A DIAMOND ETERNITY BAND**

channel set with radiant-cut diamonds, set at both sides with round diamonds; *mounted in platinum; estimated total diamond weight: 2.50cts; size: 5 1/4 (with sizing spring)*

**\$2,500 - 3,500**

**To be sold without reserve**

47

**A PAIR OF BLACK STAR SAPPHIRE AND DIAMOND CUFFLINKS**

monogrammed "W.M.K. Jr"; *mounted in platinum; estimated total diamond weight: 8.00cts; dimensions: 1 1/8 x 1in.*

**\$1,800 - 2,500**

**To be sold without reserve**



49



50



48



Rendering of lot 48 by Asprey

48

**AN EMERALD AND DIAMOND  
'BALLERINA' CLIP, ASPREY**

designed as a ballerina with arms and legs extended accented by emeralds and diamonds; *mounted in 18k gold and platinum; estimated total diamond weight: 1.50cts; gross weight approximately: 29 grams; dimensions: 2 3/4 x 1 3/8in.; signed Asprey; signed box*

**\$4,000 - 6,000**  
**To be sold without reserve**

Accompanied by original rendering by Asprey

49

**A STAR SAPPHIRE, SAPPHIRE AND  
DIAMOND CLIP, OSCAR HEYMAN &  
BROTHERS, 1945**

of snowflake design; *mounted in platinum; dimensions: 1 3/4 x 1 3/8in.; unsigned, no. 30626*

**\$2,500 - 3,500**  
**To be sold without reserve**

Accompanied by certificate of authenticity from Oscar Heyman & Brothers

50

**A PAIR OF DIAMOND STUDS WITH  
EMERALD JACKETS, ASPREY**

of cluster design centering two emerald-cut diamonds weighing: 1.21cts and 1.47cts; *diamonds mounted in platinum, jackets mounted in 18K gold; diamond ear studs signed Asprey, jackets unsigned; with signed box*

**\$7,000 - 9,000**  
**To be sold without reserve**

Accompanied by GIA report #2205062552, dated stating the 1.21ct diamond as E color and VVS2 clarity.

Accompanied by GIA report #2205062544, dated stating the 1.47ct diamond as E color and VS1 clarity.



51



52



53



54



55

51

**A DIAMOND BROOCH, RUSER**

of abstract foliate design; mounted in platinum; estimated total diamond weight: 5.00cts; dimensions: 2 1/8 x 1 1/4in.; signed Ruser; with signed box

**\$2,000 - 3,000**

To be sold without reserve

52

**A DIAMOND CROSS PENDANT NECKLACE, ATTRIBUTED TO ASPREY**

cross set in the centers with rose-cut diamonds framed by halos of round diamonds; mounted in 18k white gold; chain length: 19in.; pendant dimensions: 3/4 x 3/4in.; unsigned; with signed box.

**\$1,500 - 2,500**

To be sold without reserve

53

**A DIAMOND CROSS PENDANT NECKLACE, ASPREY**

mounted in platinum; estimated total diamond weight: 3.10cts; chain length: 10in.; pendant dimensions: 1 x 3/4in.; signed Asprey; with signed box

**\$2,000 - 3,000**

To be sold without reserve

54

**A PAIR OF STAR SAPPHIRE AND DIAMOND CUFFLINKS, VAN CLEEF & ARPELS**

carved monogram "W.M.K II"; mounted in platinum; estimated total diamond weight: 2.30cts; dimensions: 1 1/8 x 11/16in.; signed VCA, no. BHSO 703

**\$2,000 - 3,000**

To be sold without reserve

55

**A PAIR OF DIAMOND AND BLACKENED GOLD SCOTTIE CUFFLINKS, WITH A SCOTTIE DIAMOND TIE TACK, ASPREY**

designed as scottie terriers composed of blackened gold bodies accented by diamond collars together with a carved diamond stud in the shape of a scottie; mounted in 18k white gold and platinum; cufflink dimensions: 1 x 3/4in.; cufflinks signed Asprey, tie tack unsigned; with two signed boxes

**\$2,500 - 3,500**

To be sold without reserve



56

57

58

56  
**THREE DIAMOND AND GEM-SET  
 'AMERICAN FLAG' BROOCHES, VAN  
 CLEEF & ARPELS, NEW YORK**

*mounted in 18k gold; estimated total  
 diamond weight: 2.30cts; dimensions: 1  
 3/8 x 1in. and 1 x 3/4in.; brooch signed Van  
 Cleef & Arpels NYIK329-34*

**\$3,000 - 5,000**  
**To be sold without reserve**

57  
**A SAPPHIRE AND DIAMOND BRACELET,  
 FRED, FRENCH**

*the articulated strap designed as two  
 diamond set bands spaced by diamond and  
 sapphire flowers and clovers; mounted in  
 18k gold; estimated total diamond weight:  
 16.40cts; gross weight approximately: 41  
 grams; length: 7 5/8in.; unsigned, with  
 French assay marks; with signed box*

**\$5,000 - 7,000**  
**To be sold without reserve**

Accompanied by original rendering by Fred

58  
**A PAIR OF SAPPHIRE CUFFLINKS WITH  
 STUDS, RUSER AND FRED**

*comprising a pair of cufflinks, four studs  
 together with an unsigned sapphire tie  
 clip; mounted in 18k gold; gross weight  
 approximately: 26 grams; cufflink length:  
 1in.; stud length: 9/16in.; tie clip length: 1in.;  
 monogrammed cufflinks signed Ruser, studs  
 signed Fred, Paris with French assay and  
 maker's marks; tie clip with French assay and  
 maker's marks; with signed box*

**\$2,000 - 3,000**  
**To be sold without reserve**







59  
**A DIAMOND RIVIÈRE NECKLACE**  
 centering a round brilliant-cut diamond weighing: 1.90cts; *mounted in 18k gold; estimated total remaining diamond weight: 12.85cts; gross weight approximately: 28 grams; length: 17in.*

**\$5,000 - 7,000**

60  
**A PAIR OF EMERALD AND DIAMOND EAR STUDS**  
 centering two octagonal step-cut emeralds weighing: 3.61cts and 4.56cts; *mounted in 18k bi-color gold; dimensions: 7/8 x 3/4in.*

**\$3,000 - 5,000**

Accompanied by GIA report #1192486397, dated July 16, 2018, stating the emeralds as: Natural, Zambian origin, clarity enhancement (F2).

61  
**A DIAMOND RING AND BAND SET**  
 centering a marquise modified brilliant-cut diamond weighing: 1.83cts; *mounted in platinum; sizes: 5 3/4 and 6*

**\$3,000 - 5,000**

Accompanied by GIA report #6207191670, dated April, 5 2019, stating the diamond as: I color, VS1 clarity.

62  
**A DIAMOND ETERNITY BAND**  
*mounted in 18k white gold; estimated total diamond weight: 5.35cts; size: 6 1/2*

**\$3,000 - 5,000**

63  
**AN EMERALD AND DIAMOND RING**  
 centering a cut-cornered square step-cut emerald weighing: 2.97cts; *mounted in platinum; total diamond weight: 1.25cts; size: 5 1/2*

**\$2,500 - 3,500**  
**To be sold without reserve**



64



65



67



66

64

**A DIAMOND RING**

centering a marquis brilliant-cut diamond approximately: 2.00cts; mounted in 18k white gold; estimated total remaining diamond weight: 4.40cts; size: 6 1/2

**\$3,000 - 5,000**

65

**A DIAMOND BRACELET**

mounted in 18k bi-color gold; estimated total diamond weight: 29.40cts; gross weight approximately: 75 grams; length: 2 3/4in.

**\$17,000 - 22,000**

66

**A DIAMOND RING**

centering a transitional round brilliant-cut diamond approximately: 4.30cts; mounted in platinum; size: 7 1/2

**\$10,000 - 15,000**

67

**AN EMERALD AND DIAMOND RING**

centering an octagonal step-cut emerald weighing: 17.55cts; mounted in 18k bi-color gold; size: 6 1/4

**\$20,000 - 30,000**

Accompanied by GRS report #039167, dated March 16, 2018, stating the emerald as: natural, Colombian origin, evidence of minor enhancement.



68



70



69



71



72

68

**A DIAMOND AND RUBY RING**

*mounted in platinum; estimated total diamond weight: 1.45cts; size: 7*

**\$2,000 - 3,000**

69

**A DIAMOND BROOCH, CIRCA 1925**

*mounted in platinum; estimated total diamond weight: 3.00cts; dimensions: 1 7/8 x 1 1/8in.*

**\$2,000 - 3,000**

70

**AN ART DECO RUBY AND DIAMOND RING, DRAYSON LONDON, CIRCA 1930**

*centering a sugarloaf cabochon ruby approximately: 14.88 x 13.83 x 8.41mm; mounted in platinum; size: 6 1/4; partial signature Drayson London*

**\$6,000 - 8,000**

See department for AGL report

71

**AN ART DECO DIAMOND BROOCH, FRENCH, CIRCA 1930**

*mounted in platinum; estimated total diamond weight: 4.20cts; dimensions: 2 1/4 x 1 1/8in.; with French assay marks*

**\$2,000 - 3,000**

72

**A PAIR OF DIAMOND EAR CLIPS, CIRCA 1945**

*mounted in platinum; estimated total diamond weight: 4.50cts; dimensions: 1 1/4 x 3/4in. no. 18295*

**\$5,000 - 8,000**



73  
**A SAPPHIRE AND DIAMOND RING BY RAYMOND YARD WITH THREE GEM-SET AND DIAMOND ETERNITY BANDS**  
*mounted in platinum; sizes: 4 1/4, 5 1/4 and 5 1/2; one signed Yard*  
**\$2,500 - 3,500**

74  
**A DIAMOND BRACELET WRISTWATCH, HAMILTON**  
*mechanical movement; with one spare link; mounted in platinum; estimated total diamond weight: 1.55cts; case width: 14mm; length: 6 1/2 in.; dial and movement signed Hamilton*  
**\$2,000 - 3,000**

75  
**A RUBY AND DIAMOND RING**  
*centering an octagonal step-cut ruby approximately: 10.85 x 6.11 x 4.06mm; mounted in platinum; size: 5 1/2*  
**\$15,000 - 20,000**

Please contact the jewelry department f or AGL report

76  
**A GILT METAL PURSE WATCH WITH CONCEALED DIAL, CARTIER**  
*mechanical movement, gilt buttons to reveal dial, dimensions: 47mm by 27mm; dial signed Cartier, movement signed European Watch and Clock Co.*  
**\$2,500 - 3,500**



79



78

77



80



81



82

77

**A CULTURED PEARL NECKLACE WITH A SAPPHIRE AND GOLD MESH PURSE**

pearls approximately: 7.5 to 7.7mm; 14k gold; purse gross weight approximately: 120 grams; purse dimensions: 15 x 5 1/5in.; necklace length: 34in.

**\$1,800 - 2,500**

78

**A YELLOW TOPAZ AND DIAMOND BROOCH**

centering a cushion mixed-cut brownish yellow topaz approximately: 16.80 x 13.60 x 7.02mm; mounted in silver-topped gold; dimensions: 2 x 1 1/2in.

**\$1,500 - 2,000**

**To be sold without reserve**

Accompanied by AGL report #8086418, dated June 20, 2017, stating the topaz as: Natural, brownish yellow color, no evidence of heat enhancement.

79

**A PAIR OF EMERALD AND DIAMOND PENDANT EARRINGS, RUDLE**

mounted in silver-topped gold; length; 2 1/4in.; signed Rudle with Russian assay marks

**\$5,000 - 10,000**

**PROPERTY OF A SOUTH AMERICAN COLLECTOR**

80

**AN EMERALD AND DIAMOND RING**

centering a cut-cornered rectangular step-cut emerald approximately: 10.25 x 6.13 x 3.08mm; mounted in 18k bi-color gold; estimated total diamond weight: 1.30cts; size: 6

**\$2,000 - 3,000**

81

**AN AMETHYST AND DIAMOND BROOCH, CIRCA 1850**

centering an oval mixed-cut amethyst approximately: 25.03 x 13.65mm; mounted in silver-topped gold; estimated total diamond weight: 4.45cts; dimensions: 1 1/2 x 1 1/4in.

**\$3,000 - 5,000**

82

**AN EMERALD, PEARL AND DIAMOND BROOCH, CIRCA 1870**

centering a cut-cornered rectangular step-cut emerald approximately: 8.96 x 6.63 x 3.12mm; pearls approximately: 6.9 to 7.5mm; mounted in silver-topped gold; estimated total diamond weight: 2.95cts; dimensions: 1 3/4 x 1 3/4in.

**\$2,500 - 4,500**



84



85



83



86





87



88



89

83

**A DIAMOND COMPACT, BOUCHERON PARIS, FRENCH**

*mounted in 18k gold and platinum; dimensions: 3 x 2 1/2in.; signed Boucheron Paris, with French assay marks*

**\$4,000 - 6,000**

84

**A RETRO RUBY AND DIAMOND CLIP, CIRCA 1945**

*mounted in 18k gold and platinum; estimated total diamond weight: 2.30cts; gross weight approximately: 22 grams; dimensions: 1 3/4 x 1 3/4in.*

**\$2,500 - 3,500**

85

**A RUBY AND DIAMOND CLIP AND EAR CLIP SET, CIRCA 1940**

*mounted in 14k rose gold and platinum; estimated total diamond weight: 4.40cts; ear clip diameter: 1 1/4in.; clip diameter: 2 1/4in.*

**\$6,000 - 9,000**

86

**A RUBY, SILVER AND GOLD MINAUDIÈRE, BOUCHERON, PARIS, CIRCA 1945**

*mounted in sterling silver and 18k rose gold; dimensions: 5 1/4 x 3 1/2in.; signed Boucheron Paris, no.875012, 8281; with French assay and maker's marks; with cloth case and signed box*

**\$1,800 - 2,500**

87

**A DIAMOND AND RUBY CLIP, BOUCHERON, PARIS, CIRCA 1950**

*mounted in 18k bi-color gold; dimensions: 1 5/8 x 1 1/4in.; partial signature for Boucheron, Paris, with French assay marks*

**\$2,000 - 3,000**

88

**A LADY'S DIAMOND WRISTWATCH, JAEGER-LECOULTRE**

*background mechanical movement; mounted in 18k gold; gross weight approximately: 52.6 grams; length: 8in.; diameter 13mm; case numbered 70 2227, dial signed Jaeger-LeCoultre*

**\$1,500 - 2,000**

**To be sold without reserve**

89

**A PAIR OF GOLD EAR CLIPS, BUCCELLATI, ITALIAN**

*18k gold; gross weight approximately: 24 grams; diameter: 1 1/4in.; signed Buccellati*

**\$2,000 - 3,000**



91



92



93



90



94

90

**AN ENAMEL, RUBY AND DIAMOND  
HINGED HORSE BANGLE,  
FRASCAROLO, ITALIAN, CIRCA 1960**

*mounted in 18k gold; gross weight  
approximately: 161 grams; diameter: 2  
1/4in.; with maker's mark*

**\$6,000 - 9,000**

**PROPERTY OF A PALM SPRINGS  
COLLECTOR**

91

**A DIAMOND NECKLACE, LINZ, ITALIAN**

*mounted in 18k bi-color gold; estimated  
total diamond weight: 1.00ct; gross weight  
approximately: 97 grams; length: 18in.;  
signed LINZ*

**\$2,000 - 3,000**

92

**A PAIR OF DIAMOND EAR CLIPS**

*mounted in 18k gold; estimated total  
diamond weight: 1.30cts; diameter: 1in.*

**\$1,000 - 1,500**

93 <sup>Y</sup>

**A CORAL AND DIAMOND SET OF EAR  
CLIPS AND RING**

*mounted in 18k gold; ear clip dimensions:  
1 3/4 x 3/4in., ring size: 6 1/2*

**\$1,500 - 2,000**

**To be sold without reserve**

94

**A GROUP OF THREE DIAMOND AND  
GOLD BRACELETS**

*14k and 18k gold; gross weight  
approximately: 169 grams; bangle diameter:  
2 1/2in.; bracelet lengths: 7in. and 7 1/4in.*

**\$2,500 - 3,500**



95



98



96



97

95<sup>Y</sup>

**A PAIR OF CORAL AND DIAMOND EAR CLIPS**

*mounted in 18k bi-color gold; estimated total diamond weight: 2.25cts; dimensions: 1 x 1in.*

**\$2,500 - 3,500**

96

**A DIAMOND RING**

*centering a round brilliant-cut diamond approximately: 4.80ct; mounted in 18k gold; estimated total remaining diamond weight: 1.85cts; size: 7*

**\$7,000 - 9,000**

98

**A GOLD AND DIAMOND FROG BROOCH, CARTIER**

*mounted in 18k gold; dimensions: 1 3/8 x 1 1/8in.; signed Cartier, no. 20725*

**\$2,500 - 3,500**

97<sup>Y</sup>

**A CORAL AND DIAMOND CLIP**

*mounted in 18k bi-color gold; estimated total diamond weight: 4.90cts; gross weight approximately: 64 grams; dimensions: 4 1/4 x 2in.*

**\$3,500 - 5,000**



99

99 Y

**A CORAL AND DIAMOND NECKLACE  
AND EAR CLIP SET**

coral approximately: 10.8 to 15.3mm;  
mounted in 18k gold; estimated total  
diamond weight: 14.70cts; necklace length:  
16in.; ear clip diameter: 3/4in.

**\$5,000 - 7,000**



100



104



103



101



102



100

**A PAIR OF DIAMOND EN TREMBLANT FLOWER EAR CLIPS, ATTRIBUTED TO PIAGET**

*mounted in 18k bi-color gold; estimated total diamond weight: 1.75cts; gross weight approximately: 25 grams; diameter: 1 1/4in.*

**\$2,000 - 3,000**

101

**A DIAMOND EN TREMBLANT FLOWER BROOCH, PIAGET, FRENCH**

*mounted in 18k bi-color gold; estimated total diamond weight: 2.40cts; gross weight approximately: 50 grams; dimensions: 2 7/8 x 2in.; signed Piaget with French assay and maker's marks; with signed box*

**\$4,000 - 6,000**

102

**A SAPPHIRE AND DIAMOND DRESS SET, TIFFANY & CO., ITALIAN, CIRCA 1960**

*mounted in 14k gold; cufflink length: 3/4in.; stud length: 1/4 in.; signed Tiffany & Co.; with signed box*

**\$2,000 - 3,000**

103

**A SAPPHIRE AND DIAMOND RING**

*centering an octagonal step-cut sapphire weighing: 2.81cts; mounted in 18k gold; estimated total diamond weight: 1.50cts; size: 5 1/2*

**\$6,000 - 8,000**

104

**A SAPPHIRE AND DIAMOND RING**

*centering an oval cabochon sapphire approximately: 7.62 x 7.18 x 5.66mm; mounted in 18k gold; size: 6*

**\$1,800 - 2,500**





110



111



113



112

109



109

**A DIAMOND BRACELET**

*mounted in 14k white gold; estimated total diamond weight: 3.50cts; length: 7in.*

**\$2,500 - 3,500**

110

**A GREEN TOURMALINE AND DIAMOND RING AND NECKLACE SET**

*mounted in 18k white gold; estimated total diamond weight: 1.30cts; necklace length: 16in.; ring size: 5 1/4*

**\$2,000 - 3,000**

**To be sold without reserve**

111

**AN ALEXANDRITE AND DIAMOND RING, SHREVE, CRUMP & LOW**

*centering a square cushion mixed-cut alexandrite approximately: 8.69 x 8.55 x 5.46mm; mounted in 18k white gold; size: 6; signed S.C.& LOW*

**\$6,000 - 8,000**

Accompanied by AGL report #1099138, dated March 19, 2019, stating the Alexandrite as: natural Brownish Green and Light Pinkish Brown color, Sri Lankan origin, no evidence of clarity enhancement.

112

**A DIAMOND RING**

*mounted in 18k white gold; estimated total diamond weight: 6.15cts; size: 7 1/2*

**\$3,500 - 4,500**

113

**THREE DIAMOND ETERNITY BANDS**

*mounted in platinum; estimated total diamond weight: 4.20cts; sizes: 7 1/2*

**\$3,000 - 5,000**





114



115



116



117



118

114

**AN EMERALD AND DIAMOND RING, TIFFANY & CO.**

centering an octagonal step-cut emerald approximately: 10.03 x 7.90 x 6.48mm; mounted in platinum; size: 5 3/4; signed Tiffany & Co.

**\$6,000 - 10,000**

115

**A PAIR OF YELLOW SAPPHIRE AND DIAMOND STUD EARRINGS**

mounted in 18k white gold; estimated total diamond weight: 1.30cts; diameter: 1/2in.

**\$1,800 - 2,200**

116

**A DIAMOND NECKLACE**

mounted in 18k white gold; estimated total diamond weight: 9.15cts; length: 15in.

**\$4,000 - 6,000**

117

**A DIAMOND RING**

centering a round brilliant-cut diamond approximately: 2.05cts; mounted in platinum; size: 7 1/2

**\$8,000 - 10,000**

118

**A DIAMOND RING, STEFAN HAFNER**

mounted in rhodium plated 18k gold; estimated total diamond weight: 2.10cts; size: 6 1/2; signed Stefan Hafner

**\$1,800 - 2,500**



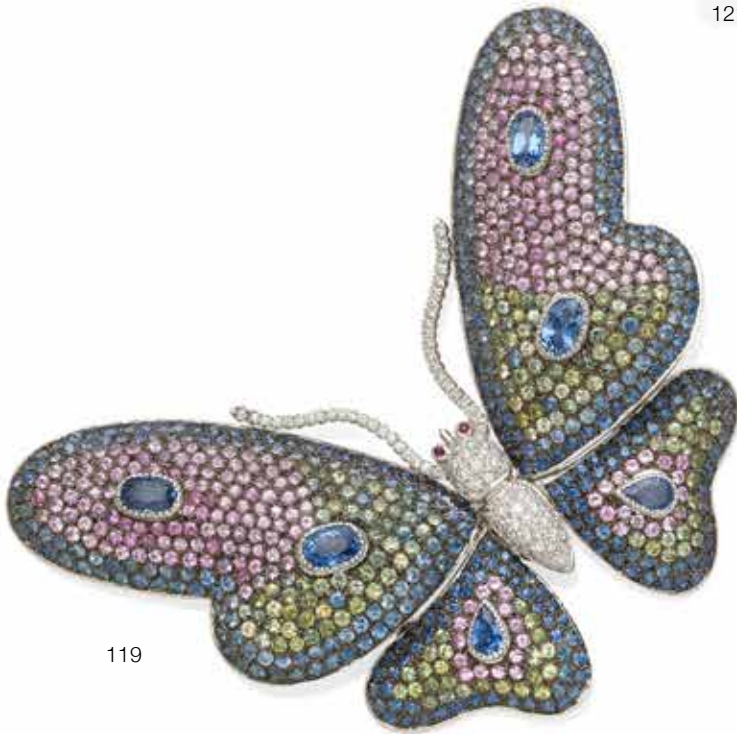
120



121



123



119



122

119

**A DIAMOND AND GEM-SET BUTTERFLY CLIP**

*mounted in rhodium plated 18k gold; gross weight approximately: 53 grams; dimensions: 3 x 4in.*

**\$4,000 - 6,000**

120

**A SAPPHIRE AND DIAMOND RING**

*centering an oval brilliant-cut sapphire weighing: 10.93cts; mounted in rhodium plated 18k white gold; estimated total diamond weight: 1.35cts; size: 7*

**\$3,000 - 5,000**

Accompanied by GIA report #5111693637, dated May 23, 2018, stating the sapphire as: Natural, Sri Lankan origin, evidence of heat enhancement.

121

**A PINK SPINEL AND DIAMOND RING**

*centering a cushion mixed-cut pink spinel approximately: 8.85 x 7.22 x 4.27mm; mounted in 18k white gold; size: 5 1/2*

**\$2,000 - 3,000**

**To be sold without reserve**

122

**A CATS-EYE CHRYSOBERYL AND DIAMOND RING**

*centering a round double cabochon cats-eye chrysoberyl approximately: 11.82 x 11.82 x 7.98mm; mounted in platinum; size: 5*

**\$2,000 - 3,000**

**To be sold without reserve**

123

**A PAIR OF DIAMOND PENDANT EARRINGS**

*mounted in 18k white gold; estimated total diamond weight: 5.55cts; length: 2 1/4in.*

**\$2,500 - 3,500**



124

125

126

**PROPERTY OF A LADY**

124

**A SAPPHIRE AND DIAMOND RING**

centering a cushion mixed-cut sapphire approximately: 11.15 x 8.53 x 6.92mm; mounted in 18k bi-color gold; estimated total diamond weight: 1.10cts; size: 6 1/4

**\$1,800 - 2,500**

125

**A COLORED DIAMOND, DIAMOND AND GEM-SET NECKLACE AND PENDANT EARRING SET**

mounted in 18k white and blackened gold; estimated total diamond weight: 4.25cts; necklace length: 16 1/2in.; earring length: 1 3/4in. (yellow diamonds untested for origin of color)

**\$7,000 - 10,000**

126

**AN ORANGEY PINK TOURMALINE AND DIAMOND RING**

centering a round brilliant mixed-cut orangey-pink tourmaline approximately: 9.85 x 9.85 x 6.65mm; mounted in rhodium and gold plated 18k white gold; size: 5 1/2

**\$2,000 - 3,000**  
To be sold without reserve



127



129



128



130



131

127

**A DIAMOND ETERNITY RING**

*mounted in 18k white gold; estimated total diamond weight: 8.00cts; size: 6 1/2*

**\$3,000 - 5,000**

128

**A SAPPHIRE AND DIAMOND BUTTERFLY BROOCH**

*mounted in silver-topped gold; estimated total diamond weight: 1.80cts; dimensions: 2 1/2 x 3 1/2in.*

**\$2,000 - 3,000**

129

**A DIAMOND KINETIC RING**

*mounted in 18k white gold; estimated total diamond weight: 1.00ct; size: 6 1/4*

**\$2,500 - 3,500**

130

**A PAIR OF EMERALD AND DIAMOND PENDANT EARRINGS**

*mounted in silver and gold plated silver; length: 2 1/4in.*

**\$2,000 - 3,000**

131

**A PAIR OF COLORED DIAMOND AND DIAMOND PENDANT EARRINGS**

*mounted in silver and gold plated silver; length: 2 1/2in. (yellow diamonds untested for origin of color)*

**\$2,000 - 3,000**

To be sold without reserve



132

133

132

**A PAIR OF TANZANITE AND DIAMOND  
PENDANT EARRINGS**

*mounted in silver and gold plated silver;  
length: 2 1/8in.*

**\$2,000 - 3,000**

**To be sold without reserve**

133

**A COLORED DIAMOND AND DIAMOND  
NECKLACE**

*mounted in black rhodium plated 18k white  
gold; total diamond weight: 92.08cts; gross  
weight approximately: 92 grams; length:  
16in. (black diamonds untested for origin of  
color)*

**\$13,000 - 15,000**



134



135



136

134

**A PAIR OF EMERALD AND DIAMOND STUD EARRINGS**

centering two oval cabochon emeralds approximately: 10.10 x 8.20 x 4.80mm and 10.10 x 8.20 x 4.50mm; mounted in silver-topped gold; estimated total diamond weights: 2.40cts; dimensions: 3/4 x 5/8in.

**\$12,000 - 15,000**

Accompanied by AGL report #1100450, dated April 30, 2019, stating the emeralds as: Natural, Colombian origin, minor clarity enhancement.

135

**AN EMERALD NECKLACE**

centering a pear cabochon emerald approximately: 16.90 x 11.10 x 5.45mm; mounted in silver and 18k gold; length: 17in.

**\$5,000 - 7,000**

Accompanied by GIA report #1100451, dated April 30, 2019, stating the emerald as: Natural, Colombian origin, minor clarity enhancement.

136

**A RUBY AND EMERALD RING**

centering a sugarloaf cabochon ruby approximately: 10.71 x 9.43 x 5.52mm; mounted in 18k gold; size: 6

**\$6,000 - 8,000**





137



140



138



139

137

**A PINK SAPPHIRE AND DIAMOND RING**

centering a cushion brilliant step-cut pink sapphire weighing: 3.46cts; mounted in silver-topped gold; estimated total diamond weight: 1.25cts; size: 5 1/2

**\$5,000 - 7,000**

Accompanied by GIA report #1172795409, dated April 14, 2017, stating the pink sapphire as: Natural, Burmese origin, no indications of heat enhancement.

138

**A PAIR OF RUBY AND DIAMOND PENDANT EARRINGS AND RING SET, RUDLE**

mounted in silver-topped gold; estimated total diamond weight: 3.20cts; earring length: 1 7/8in.; ring: 7 1/2; signed S.V. Rudle with Russian assay marks

**\$2,000 - 4,000**

139

**A RUBY, SAPPHIRE AND DIAMOND HINGED BANGLE**

centering an oval brilliant step-cut ruby weighing: 3.05cts; mounted in silver-topped gold; estimated total diamond weight: 4.90cts; diameter: 2 1/4in.

**\$3,000 - 5,000**

Accompanied by GIA report #5171695034, dated July 15, 2016, stating the ruby as: Natural, Burmese origin, no indications of heat enhancement.

140

**A DIAMOND CRESCENT BROOCH, CIRCA 1890**

mounted in silver-topped gold; estimated total diamond weight: 4.00cts; dimensions: 1 3/4 x 1 1/2in.

**\$3,000 - 5,000**





143



142



141



144

141

**A DIAMOND BROOCH, CIRCA 1880**

*mounted in silver-topped gold; estimated total diamond weight: 4.35cts; dimensions: 1 1/2 x 1 3/4in.*

**\$2,500 - 3,500**

**To be sold without reserve**

142

**A PINK SAPPHIRE, COLORED PEARL AND DIAMOND RING**

*centering an octagonal step-cut purplish pink sapphire approximately: 7.70 x 6.50 x 4.12cts; mounted in platinum; size: 5 1/2 (grey pearls untested for origin of color)*

**\$6,000 - 8,000**

Accompanied by GIA report #6167101523, dated April, 29, 2014, stating the pink sapphire as: Natural, Burmese origin, no indications of heat enhancement.

143

**A RUBY AND DIAMOND RING**

*centering an oval mixed-cut ruby approximately: 10.47 x 7.02 x 3.70cts; mounted in 18k gold; estimated total diamond weight: 1.15cts; size: 5*

**\$6,000 - 8,000**

Accompanied by AGL report #1077099, dated July 27, 2016, stating the ruby as: Natural, Burmese origin, no evidence of heat enhancement.

144

**A RUBY AND DIAMOND NECKLACE, CIRCA 1880**

*mounted in silver-topped gold; estimated total diamond weight: 2.50cts; length: 14in.*

**\$4,000 - 7,000**



145



147



149



146



148

145

**A RUBY AND DIAMOND RING**

*mounted in platinum; size: 7 3/4*

**\$1,800 - 2,500**

146

**A DIAMOND AND ENAMEL HINGED BANGLE, PICCINI FIRENZE, ITALIAN**

*mounted in 18k gold; estimated total diamond weight: 2.15cts; diameter: 2 3/8in.; signed Piccini, Firenze*

**\$3,000 - 5,000**

147

**A RUBY AND DIAMOND RING, FRENCH, CIRCA 1905**

*centering an oval mixed-cut ruby approximately: 9.48 x 7.12 x 3.60mm; mounted in 18k gold and platinum; size: 7 1/4; with French assay marks, no. 8425*

**\$6,000 - 8,000**

Please contact the Jewelry department for AGL report.

148

**AN ENAMEL AND DIAMOND BROOCH**

*mounted in silver-topped gold; dimensions: 2 x 2in.*

**\$1,200 - 1,800**

149

**A PEARL, DIAMOND AND GEM-SET BROOCH**

*pearls approximately: 3.2 to 4.3mm; mounted in silver-topped gold; estimated total diamond weight: 2.30cts; dimensions: 2 1/4 x 2in.*

**\$2,000 - 3,000**

To be sold without reserve



151



150



152

153

150

**A SAPPHIRE AND DIAMOND BROOCH, RUSSIAN, 1878**

centering an oval pyramidal cabochon sapphire approximately: 11.65 x 7.92 x 8.90cts; inscribed "Given by her Majesty the Empress of Russia 11, January 1878, Ellen Coombs"; mounted in 14k gold; diameter: 1 1/2in.;

**\$5,000 - 7,000**

Accompanied by AGL report #1099695, dated April 4, 2019, stating the sapphire as: Natural, Sri Lankan origin, no evidence of heat enhancement.

151

**A GROUP OF THREE SAPPHIRE AND DIAMOND BROOCHES, CIRCA 1900**

mounted in 18k gold and platinum; estimated total diamond weight: 3.00cts; dimensions: 2 x 1 3/4in., 1 5/8 x 1in. and 1 1/4 x 1/8in.; bar pin signed Yard

**\$2,200 - 2,800**

152

**A SAPPHIRE, PEARL AND DIAMOND PENDANT/BROOCH**

centering a cushion mixed-cut sapphire approximately: 17.04 x 14.80 x 10.08mm; mounted in platinum-topped gold; estimated total diamond weight: 3.15cts; dimensions: 2 x 1 1/2in.

**\$8,000 - 12,000**

153

**A MULTI-STRAND NATURAL PEARL NECKLACE**

natural pearls approximately: 3.3 to 4.5mm; mounted in 18k bi-color gold; lengths: 14 to 18in.

**\$5,000 - 8,000**

Accompanied by GIA report #5192420527, dated June 29, 2018, stating the pearls as: Natural, Pinctada species, saltwater, Unio species, freshwater one pearl undetermined.



154

155



156



154

**A CAMEO NECKLACE**

*mounted in 18k gold; length: 15in.*

**\$1,500 - 2,000**

155

**A DIAMOND CRESCENT BROOCH,  
CIRCA 1880**

*mounted in 14k gold; estimated total  
diamond weight: 5.00cts; dimensions: 1 1/2  
x 1 3/8in.*

**\$2,500 - 3,500**

156

**A PAIR OF DIAMOND AND ENAMEL  
EARRINGS AND HINGED BANGLE,  
CIRCA 1850**

*mounted in 14k gold; gross weight  
approximately: 51 grams; earring dimensions:  
1 3/8 x 1in.; bangle diameter: 2 1/4in.*

**\$3,000 - 5,000**



157



158



159



160

157

**A SAPPHIRE AND DIAMOND RING**

centering a cushion brilliant step-cut sapphire weighing: 0.71ct; mounted in 14k bi-color gold; size: 6 1/2

**\$4,000 - 6,000**

Accompanied by GIA report #5206515724, dated August 3, 2015, stating the sapphire as: Natural, Kashmir origin, no indication of heat enhancement.

Accompanied by GRS report #062234, dated July 16, 2015, stating the sapphire as: natural, no indication of heat enhancement.

158

**A SAPPHIRE AND DIAMOND NAVETTE RING**

centering a cushion brilliant-cut sapphire approximately: 5.71 x 4.03 x 3.33mm; mounted in 18k gold; estimated total diamond weight: 1.25cts; size: 5 1/4

**\$2,000 - 3,000**

**To be sold without reserve**

159

**A PAIR OF AQUAMARINE BRACELETS, CIRCA 1850**

mounted in 18k gold; gross weight approximately: 72 grams; lengths: 6 3/4in.

**\$1,200 - 1,800**

**To be sold without reserve**

160

**A DIAMOND BAR BROOCH, CIRCA 1880**

mounted in 14k gold; estimated total diamond weight: 1.90cts; length: 1 5/8in.

**\$3,000 - 5,000**



162

163

161



164



165



163

**A PAIR OF TANZANITE AND DIAMOND PENDANT EARRINGS**

*mounted in 18k gold; estimated total diamond weight: 2.35cts; length: 2in.*

**\$3,000 - 5,000**

164

**A TANZANITE, COLORED DIAMOND AND DIAMOND RING**

*cushion mixed-cut tanzanite approximately: 12.46 x 8.95 x 7.79mm; mounted in 18k bi-color gold; gross weight approximately: 25 grams; size: 7 1/2 (yellow diamonds untested for origin of color)*

**\$1,500 - 2,000**

165

**A BLUE ZIRCON, ENAMEL AND DIAMOND BROOCH WITH A DIAMOND RUBY, BLACK ONYX AND ENAMEL PENDANT/BROOCH**

*mounted in 18k bi-color gold; brooch dimensions: 4 x 2 5/8in.; pendant dimensions: 2 3/8 x 2 1/8in.*

**\$2,000 - 3,000**

161

**A PAIR OF BLUE TOPAZ EAR CLIPS WITH A PAIR OF GOLD EAR CLIPS**

*mounted in 18k gold; lengths: 3/4in and 1in.*

**\$1,500 - 2,000**

162

**AN 18K GOLD LINK NECKLACE, ITALIAN**

*18k gold; weighing approximately: 291 grams; length: 37in.; signed Italy*

**\$6,500 - 8,500**



166



167



168



169



170

166

**A DIAMOND AND GOLD BRACELET WRISTWATCH, BVLGARI**

quartz movement; 18k gold; gross weight approximately: 90 grams; case width: 15mm; length: 6in.; case, dial and movement signed, case stamped BJ07 P.407

**\$4,500 - 5,500**

167

**A GOLD HINGED BANGLE, BVLGARI, ITALIAN**

18k gold; weighing approximately: 34 grams; diameter: 2 3/8in.; signed Bvlgari with Italian assay marks

**\$1,500 - 2,000**

168

**A GOLD 'LOVE' BANGLE, CARTIER**

18k rose gold; weighing approximately: 39 grams; diameter: 2 3/4in.; size: 21; signed Cartier no. AAS356

**\$3,000 - 5,000**

169

**A DIAMOND BEAR PENDANT NECKLACE, POMELLATO**

mounted in 18k gold; gross weight approximately: 26 grams; signed Pomellato

**\$2,000 - 3,000**

170

**A RUBY AND DIAMOND RING**

centering a heart brilliant-cut diamond weighing approximately: 1.20cts, and a heart brilliant-cut ruby weighing approximately: 1.15cts; mounted in 14k gold; size: 4 3/4

**\$5,000 - 7,000**

Accompanied by GIA report # 6204074818, dated February 19, 2019, stating the ruby as: Thai origin, no indications of heating.





171



171

**A RUBY AND DIAMOND RING**

centering a pear brilliant-cut ruby approximately: 9.14 x 7.01 x 4.73mm; mounted in 18k gold and platinum; size: 4 3/4

**\$6,000 - 8,000**

172

**A GROUP OF THREE RUBY, DIAMOND AND GOLD RINGS, SALAVETTI**

mounted in 18k tri-color gold; size: 7 1/4; signed Salavetti

**\$1,400 - 1,800**

172



173

173

**A GOLD AND SILVER NECKLACE AND BRACELET SET, VAN CLEEF & ARPELS, FRENCH**

18k bi-color gold and sterling silver; gross weight approximately: 126 grams; bracelet length: 7 1/4in.; necklace length: 15 3/4in.; signed VCA, no. 14008, no. 420416; with French assay marks

**\$5,000 - 8,000**

174



174

**A DIAMOND CHAIN RING, CARTIER**

mounted 14k bi-color gold; size: 6; signed Cartier

**\$1,800 - 2,500**

**To be sold without reserve**



175

175  
**A TURQUOISE AND DIAMOND RING**  
*mounted in 18k bi-color gold; estimated total diamond weight: 1.35cts; size: 8 1/2*

**\$1,800 - 2,500**

176  
**A PAIR OF TURQUOISE AND DIAMOND EAR CLIPS**  
*mounted in 18k bi-color gold; estimated total diamond weight: 2.20cts; dimensions: 1 x 7/8in.*

**\$2,500 - 3,550**

176

**PROPERTY OF A PALM SPRINGS COLLECTOR**

177  
**A GOLD NECKLACE**  
*18k gold; weighing approximately: 94 grams; length: 17in.*

**\$2,500 - 3,500**

177

178  
**A DIAMOND BAND, CHOPARD**  
*mounted in 18k gold; estimated total diamond weight: 1.00ct; size: 7 1/4 (open shank); signed Chopard, no. 9206247 with maker's mark*

**\$1,800 - 2,500**

178



179



180



181



182

179

**A PAIR OF TURQUOISE AND DIAMOND EAR CLIPS**

*mounted in 18k gold; dimensions: 1 1/8 x 1 1/8in.*

**\$1,000 - 1,500**

**PROPERTY OF A PALM SPRINGS COLLECTOR**

180

**A DIAMOND RING**

*centering a round brilliant-cut diamond approximately; 3.50cts; mounted in 14k gold and platinum; size: 5 1/2 (hinged shank)*

**\$7,000 - 9,000**

181

**AN ENAMEL AND DIAMOND BRACELET**

*mounted in 14k tri-color gold; estimated total diamond weight: 1.50cts; length: 8in.*

**\$2,800 - 3,800**

182

**A PAIR OF LAPIS LAZULI, TURQUOISE, AQUAMARINE AND DIAMOND EAR PENDANTS**

*mounted in 18k gold; length: 2 3/4in.*

**\$1,500 - 2,000**



183



185



184

183  
**A GOLD DRESS SET, SCHLUMBERGER FOR TIFFANY & CO.**

*mounted in 18k gold; shirt studs mounted in 14k and 18k gold; cufflink length: 1 1/4in.; stud length: 1in.; cufflinks signed Schlumberger and Tiffany*

**\$1,000 - 1,500**

184  
**A SET OF THREE DIAMOND RINGS, CARTIER, PIAGET AND BOUCHERON**

*mounted in 18k gold and 18k tri-color gold; sizes: 4, 5 and 6; signed Cartier, no. 22185848 with French assay marks; signed Piaget, no. A16267, 1992; signed Boucheron, no. 18585, with French assay and maker's marks*

**\$2,000 - 3,000**

185  
**A GOLD, SILVER AND BLACK IRON LACQUER 'BUBBLE' CUFF, ANGELA CUMMINGS FOR TIFFANY & CO., CIRCA 1980**

*18k bi-color gold and sterling silver; weighing approximately: 50 grams; diameter: 2 1/2in.; signed T & Co.*

**\$1,500 - 2,000**  
**To be sold without reserve**





187

188



186



189

186

**A DIAMOND RING**

*mounted in 18k bi-color gold; estimated total diamond weight: 1.05cts; size: 7 1/4*

**\$1,200 - 1,800**

**To be sold without reserve**

187

**A PAIR OF DIAMOND EAR CLIPS, MARINA B.**

*mounted in 18k gold; estimated total diamond weight: 11.85cts; gross weight approximately: 33 grams; signed Marina B. no. 218031, with maker's marks*

**\$15,000 - 20,000**

188

**A DIAMOND NECKLACE**

*mounted in 18k gold; estimated total diamond weight: 1.80cts; gross weight approximately: 47 grams; length: 16in.*

**\$2,000 - 3,000**

**To be sold without reserve**

189

**A MABÉ PEARL AND DIAMOND RING, MARINA B.**

*mabé pearl approximately: 12.7mm; mounted in 18k gold; size: 6; signed Marina B., no. C2815, with maker's mark*

**\$1,000 - 1,500**



190



191



192



193



194

190 <sup>Y</sup>

**A WATERMELON TOURMALINE, PEARL AND GEM-SET FISH CLIP, SEAMAN SCHEPPS**

*mounted in 18k gold; dimensions: 1 3/4 x 1 7/8in.; signed Seaman Schepps with maker's mark*

**\$2,500 - 3,500**

191

**A DIAMOND RING, MARINA B.**

*mounted in 18k gold; estimated total diamond weight: 1.35cts; size: 6 1/2 (open shank); signed Marina B. no. 1123006, with maker's marks*

**\$2,500 - 3,500**

192

**A GOLD RING WITH A DIAMOND RING, BVLGARI AND CARTIER**

*18k gold; sizes: 5 3/4 and 6 1/4; one signed Bvlgari and one signed Cartier, no. 33GA050, 1995 with french assay marks*

**\$1,000 - 1,500**

**PROPERTY OF A PALM SPRINGS COLLECTOR**

193

**A PAIR OF DIAMOND BANGLES**

*mounted in 14k bi-color gold; estimated total diamond weight: 4.15cts; gross weight approximately: 38 grams; diameter: 2 3/8in.*

**\$2,500 - 3,500**

194 <sup>Y</sup>

**A PAIR OF BLUE LACE AGATE, TURQUOISE, CORAL AND DIAMOND EAR PENDANTS**

*mounted in 18k gold; length: 3 1/2in.*

**\$1,500 - 2,000**



195  
**A PAIR OF DIAMOND EAR CLIPS**  
 centering two round brilliant-cut diamonds  
 approximately: 2.00cts and 1.98cts;  
 mounted in 14k white gold; length: 3/4in.

**\$12,000 - 18,000**

196  
**A DIAMOND LINE BRACELET**  
 mounted in 18k white gold; estimated total  
 diamond weight: 10.85cts; length: 7 1/4in.

**\$5,000 - 7,000**

197  
**A SAPPHIRE AND DIAMOND ETERNITY  
 BAND**  
 mounted in 14k white gold; size: 6 1/4

**\$1,200 - 1,500**

198  
**A SAPPHIRE AND DIAMOND RING**  
 centering an oval brilliant-cut sapphire  
 weighing: 1.42cts; mounted in platinum; total  
 diamond weight: 1.03cts; size: 6 1/2

**\$3,000 - 5,000**

199  
**A SAPPHIRE AND DIAMOND  
 'COBBLESTONE' PENDANT NECKLACE,  
 TIFFANY & CO.**  
 mounted in platinum; estimated total  
 diamond weight: 1.00ct; pendant  
 dimensions: 1 3/8 x 1 3/8in.; signed Tiffany &  
 Co.; with signed pouch

**\$5,000 - 6,000**

200  
**A SAPPHIRE AND DIAMOND RING**  
 centering an oval brilliant step-cut sapphire  
 weighing: 5.13cts; mounted in rhodium  
 plated 18k white gold; estimated total  
 diamond weight: 2.35cts; size: 7

**\$2,500 - 3,500**

Accompanied by GIA report #2192949281,  
 dated January 9, 2019, stating the sapphire  
 as: Natural, Sri Lankan origin, no indications  
 of heat enhancement.

201  
**A DIAMOND ETERNITY BAND**  
 mounted in rhodium plated 18k white gold;  
 estimated total diamond weight: 4.60cts;  
 size: 7

**\$2,500 - 3,500**

202  
**A MOONSTONE AND AMETHYST  
 NECKLACE**  
 mounted in 18k white gold; length: 32in.

**\$5,500 - 6,500**

203  
**A PAIR OF SAPPHIRE AND DIAMOND  
 STUD EARRINGS**  
 mounted in 18k white gold; estimated total  
 diamond weight: 1.25cts; diameter: 5/8in.

**\$2,000 - 3,000**





199



200



201



202



203



204



205

204

**A PAIR OF BAROQUE CULTURED PEARL, AQUAMARINE AND DIAMOND PENDANT EARRINGS**

pearls approximately: 12.2 to 13.0mm; mounted in 18k white gold; length: 2 1/2in.

**\$1,500 - 2,000**

205

**A CULTURED PEARL AND DIAMOND CUFF**

pearls approximately: 11.1 to 11.5mm; mounted in 18k white gold; total diamond weight: 2.86cts; diameter: 2 1/2in.

**\$2,500 - 3,500**

206

**A KUNZITE AND DIAMOND PENDANT NECKLACE**

centering a cushion mixed-cut kunzite approximately: 32.0 x 26.0 x 16.4mm; mounted in 18k white gold; 14k white gold chain; estimated total diamond weight: 1.45cts; pendant dimensions: 2 x 1 1/4in.; chain length: 18in.

**\$5,000 - 8,000**

207

**A DIAMOND RING**

mounted in platinum; estimated total diamond weight: 5.00cts; size: 7 1/2

**\$2,500 - 3,500**

208

**A DIAMOND NECKLACE**

mounted in 18k white gold; estimated total diamond weight: 13.00cts; length: 18 1/2in.

**\$6,000 - 9,000**

209

**AN AQUAMARINE AND DIAMOND RING/ PENDANT**

centering a cut-cornered rectangular mixed-cut aquamarine approximately: 23.62 x 18.57 x 12.00mm; mounted in 18k white gold; total diamond weight: 3.30cts; pendant dimensions: 1 1/8 x 1in.; size: 6 3/4

**\$2,500 - 3,500**

210

**A PAIR OF AMETHYST AND AQUAMARINE PENDANT EARRINGS**

mounted in rhodium plated 18k white gold; length: 2 3/8in.

**\$1,800 - 2,200**

206



207



208



209



210





211

213

215

214

212



216



217



218

211

**A PAIR OF BLUE TOPAZ AND DIAMOND PENDANT EARRINGS**

mounted in 18k white gold; estimated total diamond weight: 2.40cts; length: 1 1/8in.

**\$3,000 - 5,000**

212

**A JADEITE AND DIAMOND RING**

centering an oval double cabochon jadeite weighing: 19.87cts; mounted in platinum; estimated total diamond weight: 1.50cts; size: 6 1/2

**\$1,500 - 2,000**

Accompanied by GIA report #2205102313, dated May 1, 2019, stating the jade as: natural, no indications of impregnation or color enhancement.

Accompanied by Mason Kay report #190501-2207, dated February 21, 2019, stating: Natural Jadeite Jade-No Dye or Impregnation detected-'A' Jade.

213

**A SAPPHIRE AND DIAMOND RING**

mounted in platinum; size: 7 1/4

**\$2,500 - 3,500**

214

**A DIAMOND NECKLACE**

mounted in 18k white gold; total diamond weight: 7.70cts; gross weight approximately: 77 grams; length: 16in.

**\$4,000 - 7,000**

215

**AN AQUAMARINE AND DIAMOND NECKLACE AND PENDANT EARRINGS SET**

mounted in 18k white gold; estimated total diamond weight: 8.15cts; necklace length: 19in.; earring length: 1 3/4in.

**\$4,000 - 6,000**

216

**AN OPAL, EMERALD, DIAMOND AND ENAMEL RING**

centering an oval cabochon opal approximately: 17.25 x 11.66 x 4.52mm; mounted in 18k bi-color and blackened gold; size: 5 3/4

**\$2,000 - 3,000**

**PROPERTY FROM A PARADISE VALLEY ESTATE**

217

**AN OPAL AND DIAMOND PENDANT NECKLACE**

centering a pear cabochon opal approximately: 16.70 x 11.80 x 4.00mm; mounted in 14k white gold; 14k white gold chain; length: 16 1/4in.

**\$1,000 - 1,500**

**To be sold without reserve**

218

**A JADEITE AND DIAMOND RING**

centering an oval double cabochon jadeite weighing: 5.00cts; mounted in platinum; estimated total diamond weight: 2.05cts; size: 6

**\$6,000 - 8,000**

Accompanied by Mason Kay report #190412-500, dated April 12, 2019, stating: Natural Jadeite Jade-No Dye or Impregnation detected-'A' Jade.



219

219

**A DIAMOND BYPASS RING**

centering two trillion-cut diamonds approximately: 1.55cts and 1.95cts; mounted in platinum; size: 6 1/4

**\$7,000 - 10,000**

220

220

**AN EMERALD AND DIAMOND NECKLACE AND PENDANT EARRINGS SET**

mounted in 14k bi-color gold; estimated total diamond weight: 3.45cts; necklace length: 16in.; earring length: 1 3/4in.

**\$2,000 - 3,000**

To be sold without reserve

221

221

**AN EMERALD AND DIAMOND RING**

centering a cut-cornered rectangular step-cut emerald approximately: 9.59 x 7.92 x 4.57mm; mounted in 18k bi-color gold; size: 5 1/4

**\$3,000 - 5,000**

To be sold without reserve



222

223

224

225

226

222

**A PAIR OF EMERALD AND DIAMOND PENDANT EARRINGS**

centering two round brilliant-cut diamonds approximately: 1.25cts and 1.45cts; mounted in platinum; length: 2 1/4in.

**\$3,500 - 4,500**

223

**AN EMERALD AND DIAMOND CAT BROOCH**

mounted in 18k bi-color gold; estimated total diamond weight: 1.35cts; dimensions: 3/4 x 3/4in.

**\$1,500 - 2,000**

224

**A DIAMOND LINE BRACELET**

mounted in 14k white gold; estimated total diamond weight: 4.40cts; size: 7 1/8in.

**\$2,000 - 3,000**  
To be sold without reserve

225

**AN EMERALD AND DIAMOND RING**

centering a round brilliant-cut diamond approximately: 1.85cts; mounted in platinum; size: 6 3/4

**\$3,500 - 4,500**

226

**AN EMERALD AND DIAMOND BEETLE STICK PIN**

mounted in rhodium plated 14k gold; estimated total diamond weight: 2.05cts; dimensions: 2 5/8 x 1 1/4in.

**\$2,000 - 3,000**



227

227

**A DIAMOND RING**

centering a transitional round brilliant-cut diamond approximately: 1.80cts; *mounted in platinum; size: 5 1/2*

**\$5,000 - 7,000**



228

228

**AN EMERALD AND DIAMOND RING, CIRCA 1925**

centering an oval cabochon emerald approximately: 10.28 x 8.67 x 6.30mm; *mounted in platinum; size: 6 3/4*

**\$6,000 - 8,000**



229

**AN EMERALD AND DIAMOND BRACELET**

*mounted in platinum; estimated total diamond weight: 8.40cts; gross weight approximately: 67 grams; length: 7 1/2in.*

**\$6,000 - 8,000**

230

**A DIAMOND BRACELET**

*mounted in platinum; estimated total diamond weight: 3.50cts; length: 6 3/4in.*

**\$2,000 - 3,000**



231

231

**A DIAMOND LAPEL WATCH**

*mounted in platinum; estimated total diamond weight: 1.50cts; dimensions: 2 3/4 x 1 5/8in.; dial signed Tiffany & Co.*

**\$2,500 - 3,500**





232

232  
**A PEARL AND DIAMOND BAR PIN, CIRCA 1900**  
pearls approximately: 4.9mm; mounted in platinum; length: 3 5/8in.

**\$2,000 - 3,000**



234

233  
**A COLORED DIAMOND AND DIAMOND BROOCH, FRENCH**  
mounted in 18k tri-color gold; dimensions: 1 7/8 x 1 1/4in.; with French assay marks (pink, brown and yellow diamonds untested for origin of color)

**\$5,000 - 7,000**

234  
**A CARVED MOONSTONE AND DIAMOND BROOCH, CIRCA 1915**  
mounted in platinum; estimated total diamond weight: 1.25cts; dimensions: 2 x 1 1/4in.

**\$2,000 - 2,500**



235

**PROPERTY OF A SOUTH AMERICAN COLLECTOR**

235  
**A DIAMOND LORGNETTE, CIRCA 1905**  
mounted in 18k white gold; estimated total diamond weight: 1.90cts; dimensions: 4 3/4 x 1 3/4in.

**\$3,000 - 5,000**



236



237



238

236

**A DIAMOND RING, CARTIER, 1999**

*mounted in 18k white gold; signed Cartier 1999, no. AU5946; with signed box*

**\$2,000 - 3,000**

237

**A RUBY AND DIAMOND BRACELET**

*mounted in rhodium plated 18k white gold; estimated total diamond weight: 3.75cts; length: 7 1/2in.*

**\$3,500 - 4,500**

**PROPERTY OF A LOS ANGELES COLLECTOR**

238

**A DIAMOND RING SET**

*emerald-cut diamond approximately: 1.25cts; mounted in platinum; size: 5 3/4*

**\$3,000 - 5,000**

239

**A DIAMOND ETERNITY BAND**

*mounted in rhodium plated 14k white gold; estimated total diamond weight: 4.00cts; size: 5*

**\$2,000 - 3,000**

240

**A RUBY AND DIAMOND RING**

*centering a pear cabochon ruby weighing: 7.59cts; mounted in 18k white gold; estimated total diamond weight: 1.55cts; size: 6 1/2*

**\$4,000 - 6,000**

Accompanied by GIA report #2151433860, dated May 06, 2013, stating the ruby as: Natural, with evidence of heat enhancement (F3).

241

**A RUBY AND DIAMOND RING**

*centering a cushion brilliant-cut ruby weighing: 3.60cts; mounted in platinum; total diamond weight: 1.18cts; size: 5 3/4*

**\$2,000 - 3,000**

**To be sold without reserve**

242

**A PAIR OF DIAMOND EAR CLIPS**

*mounted in 18k white gold; estimated total diamond weight: 2.75cts; dimensions: 1 3/8 x 7/8in.*

**\$2,000 - 3,000**

243

**A DIAMOND LARIAT**

*centering two round brilliant-cut diamonds weighing: 1.15cts and 1.79cts; mounted in 18k white gold; estimated total diamond weight: 14.60cts; length: 18in.*

**\$5,500 - 6,500**

244

**A LADY'S DIAMOND WRISTWATCH, FRANCK MULLER**

*quartz movement, with four spare links; mounted in 18k white gold; estimated total diamond weight: 2.30cts.; gross weight approximately: 100 grams; dimensions: 33 x 27mm; length: 6in.; case, dial and movement signed Frank Muller, case no. 180 1752 QZD*

**\$3,000 - 5,000**



239



240



241



242



243



244



245

245

**A PINK SAPPHIRE AND DIAMOND RING/CLIP**

centering a pear mixed-cut pink sapphire weighing: 6.52cts; mounted in 18k white gold; size: 5

**\$7,000 - 10,000**

Accompanied by AGL report #110792, dated April 25, 2019, stating the pink sapphire as: Natural, Burmese origin with no indications of heat enhancement.

246

246

**A PAIR OF DIAMOND PENDANT EARRINGS**

mounted in 18k white gold; estimated total diamond weight: 1.70cts; length: 1 1/2in.

**\$1,500 - 2,500**

247

**A RUBY AND DIAMOND NECKLACE, HAMMERMAN BROTHERS**

mounted in 18k white gold; estimated total diamond weight: 2.25cts; gross weight approximately: 48 grams; length: 16in.; with maker's mark

**\$6,000 - 8,000**

Please contact the Jewelry department for AGL report

247

248

**A RUBY AND DIAMOND RING**

centering an oval brilliant-cut ruby weighing: 4.21cts; mounted in 18k white gold and platinum; total diamond weight: 1.27cts; size: 6 1/4

**\$1,500 - 2,000**

248



249



250



251



253



252

249

**A DIAMOND RING SET**

centering an emerald-cut diamond weighing: 2.16cts; *mounted in platinum; size: 4 3/4*

**\$12,000 - 15,000**

Accompanied by GIA report #2201207486, dated April, 12, 2019, stating the diamond as: F color, VS1 clarity.

250

**A RED SPINEL AND DIAMOND RING**

centering a double sugarloaf cabochon red spinel approximately: 11.27 x 10.47 x 10.17mm; *mounted in rhodium plated 18k white gold; size: 6 3/4*

**\$2,500 - 3,500**

251

**A LADY'S DIAMOND BRACELET WRISTWATCH, JAEGER-LECOULTRE**

mechanical movement; *mounted in platinum and 18k white gold; estimated total diamond weight: 1.05cts; diameter: 13mm; length: 6 3/4in.; case no. 120848*

**\$3,000 - 5,000**

252

**A RUBY AND DIAMOND RING**

centering a cushion brilliant-cut ruby approximately: 7.98 x 5.84 x 3.29mm; *mounted in 18k white gold; estimated total diamond weight: 2.25cts; size: 5 1/2*

**\$2,000 - 3,000**

**To be sold without reserve**

253

**A DIAMOND RING**

*mounted in rhodium plated 18k white gold; total diamond weight: 3.84cts; size: 6 3/4in.*

**\$2,500 - 3,500**



254

255

257

256

254

**A PINK SPINEL AND DIAMOND PENDANT AND RING**

*mounted in 14k white gold; estimated total diamond weight: 2.30cts; pendant length: 1 3/4in.; ring size: 5 1/2*

**\$2,000 - 3,000**  
To be sold without reserve

255

**A SAPPHIRE AND DIAMOND RING**

*centering an oval brilliant mixed-cut sapphire approximately: 9.39 x 7.66 x 6.16mm; mounted in platinum; estimated total diamond weight: 1.50cts; size: 5*

**\$2,000 - 3,000**  
To be sold without reserve

257

**A PAIR OF SAPPHIRE AND DIAMOND PENDANT EARRINGS**

*mounted in titanium and 18k white gold; estimated total diamond weight: 1.00ct; length: 2 1/8in.*

**\$4,500 - 5,500**

256

**A DIAMOND LONG CHAIN**

*mounted in 18k white gold; estimated total diamond weight: 10.30cts; length: 56in.*

**\$3,000 - 5,000**

258



259



260



262



261



258

**A TANZANITE AND DIAMOND NECKLACE**

centering a trillion-cut tanzanite weighing: 6.00cts; mounted in rhodium plated 14k gold; estimated total diamond weight: 3.00cts; length: 17in.

**\$3,500 - 4,500**

259

**A PINK SPINEL AND DIAMOND RING**

centering an oval brilliant-cut pink spinel approximately: 9.53 x 5.54 x 4.20mm; mounted in rhodium plated 18k white gold; size: 5 1/2

**\$2,000 - 3,000**

**To be sold without reserve**

260

**A DIAMOND BRACELET**

mounted in rhodium plated 18k white gold; estimated total diamond weight: 9.60cts; length: 7 1/4in; width: 1 1/16in.

**\$4,000 - 6,000**

261

**A SAPPHIRE RING**

centering an oval mixed-cut sapphire weighing: 16.51cts; mounted in 18k white gold; size: 6

**\$15,000 - 20,000**

Accompanied by AGL report #1100745, dated April 30, 2019, stating the sapphire as: Natural, Sri Lankan origin, no evidence of heat enhancement.

262

**A RUBY AND DIAMOND RING**

centering a round mixed-cut ruby weighing: 2.25cts; mounted in platinum; estimated total diamond weight: 1.90cts; with French assay and maker's mark

**\$3,000 - 5,000**

Accompanied by GRS report #035149, dated April 10, 2013, stating the ruby as: Natural, Burmese origin, no indication of heat enhancement.

Accompanied by AGL report #1100449, dated April 30, 2019, stating the Ruby as: Natural, Burmese origin, no indication of heat enhancement.



264

266

265

263

263  
**A PAIR OF GOLD EAR CLIPS WITH GOLD NECKLACE, TIFFANY & CO. AND MARCO BICEGO**

18k gold; weighing approximately: 25 grams; necklace length: 47in.; ear clips length: 1/2in.; necklace signed Marco Bicego; ear clips signed T&Co.

**\$1,000 - 1,500**

264  
**AN EMERALD AND DIAMOND RING**

centering a rectangular step-cut emerald weighing: 1.50cts; mounted in 14k gold; estimated total diamond weight: 1.00ct; size: 7

**\$6,000 - 8,000**

Accompanied by AGL report #8085550, dated September 27, 2016, stating the emerald as: Natural, Colombian origin, insignificant heat enhancement.

265  
**A GOLD CHARM BRACELET, ELSA PERRETTI FOR TIFFANY & CO**

18k gold; length: 7 1/4in.; signed Elsa Perretti, Spain, Tiffany & Co.; with signed box

**\$1,800 - 2,500**

266  
**AN EMERALD AND DIAMOND FLOWER BROOCH**

mounted in platinum; estimated total diamond weight: 5.25cts; dimensions: 2 5/8 x 1in.

**\$5,000 - 7,000**





267



268



269



270



267

**THREE DIAMOND AND GOLD RINGS, CARTIER**

*mounted in 18k bi-color gold; sizes: 5 3/4, 6 1/4 and 7 1/4; signed Cartier, 2001, no. Ak5675; signed Cartier, no. CP2640; signed Cartier, no. NB0717*

**\$1,500 - 2,000**

268

**AN EMERALD AND DIAMOND RING**

*centering an octagonal step-cut emerald weighing: 6.01cts; mounted in 18k white gold; estimated total diamond weight: 4.00cts; size: 7*

**\$3,000 - 5,000**

*Accompanied by GIA report #2203124959, dated March 19, 2019, stating the emerald as: Natural, Colombian origin, clarity enhancement (F2).*

269

**TWO EMERALD AND RUBY LINE BRACELETS**

*mounted in 14k gold; gross weight approximately: 36 grams; lengths: 6 7/8 and 7in.*

**\$2,000 - 3,000**

**To be sold without reserve**

270

**AN EMERALD AND DIAMOND RING WITH A PAIR OF EMERALD PENDANT EARRINGS**

*mounted in 14k white gold; earring length: 3/4in.; ring size: 6*

**\$2,000 - 3,000**

**To be sold without reserve**



271



272



273

Proceeds to benefit The Echo Shop  
which supports outreach programs in  
Santa Clara County

271

**A CITRINE, DIAMOND AND RUBY CLIP,  
REFLECTION BY TRABERT & HOFFER,  
MAUBOUSSIN CIRCA 1940**

centering a cut-cornered rectangular step-cut citrine approximately: 36.00 x 24.10 x 16.90mm; mounted in platinum topped 14k gold; estimated total diamond weight: 1.00ct; gross weight approximately: 66 grams; dimensions: 3 1/8 x 2 3/4in.; signed Reflection Trabert & Hoeffler, Mauboussin

**\$3,000 - 5,000**

272

**A RUBY AND DIAMOND BRACELET**

mounted in 14k gold and platinum; estimated total diamond weight: 1.80cts; gross weight approximately: 83 grams; length: 7 1/4in.

**\$2,000 - 3,000**

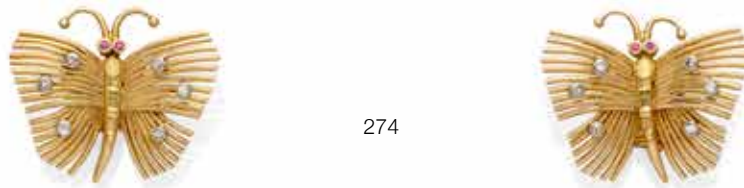
273

**A SAPPHIRE AND DIAMOND CLIP,  
CIRCA 1940**

mounted in 14k bi-color gold; gross weight approximately: 28 grams; dimensions: 3 x 1 3/4in.

**\$3,000 - 5,000**





274



275

274

**A DIAMOND AND RUBY BUTTERFLY BROOCH AND EAR CLIP SET**

*mounted in 18k gold; gross weight approximately: 28 grams; brooch dimensions: 1 3/4 x 2in.; ear clip dimensions: 1 1/8 x 1 1/4in.*

**\$2,000 - 3,000**

275

**A GEM-SET CHARM BRACELET**

*mounted in 14k gold; gross weight approximately: 155 grams; length: 7 1/4in.*

**\$2,500 - 3,500**

276

**A COLLECTION OF DIAMOND AND GEM-SET JEWELRY**

*comprising a sapphire and diamond ring, a diamond and gold bee brooch and a ruby and jadeite brooch by Tiffany & Co; mounted in 14k gold, 18k gold and platinum; estimated total diamond weight: 2.45cts; brooch dimensions: 2 x 1 1/8in. and 1 x 1in.; ring size: 6; brooch signed Tiffany*

**\$2,000 - 3,000**

277

**A GOLD COIN NECKLACE WITH TWO GOLD CHAINS**

*set with a South African Krugerrand, 1983; 14k gold, 14k bi-color gold and 18k gold; weighing approximately: 143 grams; lengths: 25in., 28in. and 31in.*

**\$1,900 - 2,500**

**PROPERTY FROM A PARADISE VALLEY ESTATE**

278

**A DIAMOND RING, OSCAR HEYMAN & BROTHERS**

*mounted in 18k gold and platinum; estimated total diamond weight: 1.50cts; size: 4 1/2; with maker's mark, no. J7446*

**\$1,200 - 1,800**

**To be sold without reserve**

279

**A DIAMOND 'TANK DIVAN' WRISTWATCH, CARTIER**

*quartz movement; with Cartier buckle; mounted in 18k gold; estimated total diamond weight: 1.30cts; gross weight approximately: 48.6 grams; case width: 30mm; case, dial and movement signed, case numbered 269338CE and 2601*

**\$6,000 - 8,000**



276



277



278



279



280

280

**A COIN AND DIAMOND NECKLACE WITH A GOLD CHAIN**

set with an Austrian, Salzburg 3 Kreuzer coin, 1681; mounted in 14k and 18k gold; estimated total diamond weight: 2.00cts; gross weight approximately: 250 grams; lengths: 15in. and 17in.

**\$3,200 - 5,200**



281

281

**A PAIR OF DIAMOND EAR CLIPS**

mounted in 18k gold; estimated total diamond weight: 13.00cts; dimensions: 1 x 7/8in.

**\$6,000 - 8,000**



282

282

**A COLLECTION OF GOLD JEWELRY**

comprising three studs, two pairs of cufflinks and a brooch; 14k and 18k gold; cufflink lengths: 7/8in. and 1 1/8in.; stud length: 1 1/4in.; brooch length: 1 3/4in.; one pair of cufflinks with French assay marks

**\$1,000 - 1,500**



283



284



285



286

**283  
A PAIR OF JADEITE AND DIAMOND EAR CLIPS**

*mounted in 18k gold; length: 1in.*

**\$2,000 - 3,000**

Accompanied by Mason Kay report #190412-325, dated April 12, 2019, stating: Natural Jadeite Jade-No Dye or Impregnation Detected-'A' Jade.

**284  
A JADEITE AND DIAMOND RING**

*centering an oval cabochon jadeite approximately: 9.54 x 12.56 x 4.65mm; mounted in 18k gold; estimated total diamond weight: 1.10cts; size: 7*

**\$3,000 - 5,000**

Accompanied by Mason Kay report #190412-719, dated April 12, 2019, stating: Natural Jadeite Jade-No Dye or Impregnation Detected-'A' Jade.

**285  
A GOLD CHARM BRACELET WITH A GOLD BRACELET**

*14k gold bracelets; four 14k and 18k gold charms; gross weight approximately: 133 grams; lengths: 7 1/2in.*

**\$1,400 - 1,800**

286  
**A PAIR OF DIAMOND HOOP EAR CLIPS**  
*mounted in 18k gold and platinum; estimated total diamond weight: 3.75cts; diameter: 1in.*

**\$2,500 - 3,500**



287



289

288

287  
**A RUBELLITE AND DIAMOND RING**  
 centering an oval brilliant mixed-cut rubellite  
 approximately: 12.27 x 10.06 x 5.81mm;  
 mounted in 18k gold; size: 5 3/4

**\$2,000 - 3,000**  
 To be sold without reserve

288  
**A DIAMOND BRACELET**  
 mounted in 14k gold; estimated total  
 diamond weight: 6.00cts; gross weight  
 approximately: 34 grams; length: 7 1/4in.

**\$2,500 - 3,500**

289  
**AN EMERALD AND DIAMOND RING**  
 centering a cut-cornered square step-  
 cut emerald approximately: 8.13 x 7.52 x  
 5.63mm; mounted in 14k gold; size: 5 1/2

**\$2,000 - 3,000**  
 To be sold without reserve

290  
**A PAIR OF PINK TOURMALINE AND  
 DIAMOND PENDANT EARRINGS**  
 mounted in 18k gold; length: 2 1/2in.

**\$3,000 - 5,000**

291  
**A DIAMOND RING, DAVID YURMAN**  
 mounted in 18k bi-color gold; estimated total  
 diamond weight: 1.50cts; size: 7; signed D.Y.

**\$2,000 - 3,000**

292  
**A DIAMOND LINK NECKLACE**  
 mounted in 14k gold; total diamond weight:  
 27.44cts; gross weight approximately: 280  
 grams; length: 28 1/2in.

**\$10,000 - 12,000**

293  
**A PINK TOURMALINE, DIAMOND AND  
 COLORED DIAMOND RING**  
 mounted in 14k gold; estimated total  
 diamond weight: 2.40cts; size: 7 (brown  
 diamonds untested for origin of color)

**\$2,000 - 3,000**  
 To be sold without reserve





290



292



291



293



297

296

295

294



298



299



300

294

**A PAIR OF DIAMOND PENDANT EARRINGS**

*mounted in 18k rose gold; length: 3 1/4in.*

**\$2,000 - 3,000**

295

**A PINK TOURMALINE SUITE**

*mounted in 14k rose gold; necklace length: 51in.; earring length: 1in.; ring size: 5 1/4*

**\$3,000 - 5,000**

To be sold without reserve

296

**A DIAMOND RING**

*centering an old European-cut diamond approximately: 4.20cts; mounted in 18k tri-color gold; size: 4*

**\$12,000 - 18,000**

297

**A PINK SPINEL AND DIAMOND ETERNITY BAND**

*mounted in 14k rose gold; size: 6 1/4*

**\$1,200 - 1,500**

298

**A PAIR OF DIAMOND PENDANT EARRINGS**

*mounted in 18k rose gold; estimated total diamond weight: 7.60cts; length: 2in.*

**\$2,000 - 3,000**

299

**THREE DIAMOND ETERNITY BANDS**

*mounted in 18k tri-color gold; estimated total diamond weight: 1.25cts; sizes: 5*

**\$1,500 - 2,000**

300

**A DIAMOND AND JET CUFF, ENIGMA, ITALIAN**

*mounted in 18k rose gold; diameter: 2 3/8in.; signed Enigma, Italy*

**\$1,500 - 2,000**



301

301  
**AN ORANGE TOPAZ AND DIAMOND RING**

centering a cushion mixed-cut orange topaz weighing: 6.55cts; *mounted in platinum; size: 6*

**\$1,500 - 2,000**  
 To be sold without reserve

302

302  
**A BI-COLOR TOURMALINE AND DIAMOND RING**

centering a cut-cornered rectangular step-cut bi-color tourmaline weighing: 38.50cts; *mounted in 18k gold; total diamond weight: 1.70cts; size: 5*

**\$2,500 - 3,500**

303

303  
**A DIAMOND AND GEM-SET NECKLACE**

*mounted in 18k tri-color gold; estimated total diamond weight: 1.10cts; gross weight approximately: 72 grams; length: 17in.*

**\$3,000 - 5,000**

304

304  
**A GARNET AND DIAMOND RING**

centering a sugarloaf cabochon garnet measuring: 11.96 x 12.0 x 8.76mm; *mounted in 18k gold; size: 7 1/2*

**\$2,000 - 3,000**



305

306

307

308

309

**PROPERTY OF A SOUTH AMERICAN COLLECTOR**

305

**A DIAMOND RING AND EAR CLIP SET**

*mounted in 18k gold; estimated total diamond weight: 6.25cts; ear clip length: 1 1/8in.; ring size: 6 1/4*

**\$2,200 - 2,800**

306

**A DIAMOND NECKLACE**

*centering a triangular rose-cut diamond approximately: 1.05cts; mounted in 18k gold; length: 16in.*

**\$2,000 - 3,000**

**To be sold without reserve**

307

**A COLORED DIAMOND NECKLACE**

*centering a briolette brown diamond approximately: 6.50cts; mounted in 18k bi-color gold; estimated total remaining diamond weight: 7.40cts; length: 24in. (brown and yellow diamonds untested for origin of color)*

**\$12,000 - 15,000**

308

**AN ORANGE TOPAZ AND DIAMOND RING**

*centering an oval orange topaz: 12.67 x 9.15 x 6.26mm; mounted in 18k white gold; estimated total diamond weight: 2.95cts; size: 5*

**\$2,000 - 3,000**

**To be sold without reserve**

309

**A PAIR OF DIAMOND PENDANT EARRINGS**

*mounted in 18k bi-color gold; estimated total diamond weight: 21.20cts; length: 2 3/4in.*

**\$18,000 - 22,000**



310



311



313



312



314



315



316



317

310

**A COLORED DIAMOND AND DIAMOND SUITE**

*mounted in 18k bi-color gold; estimated total diamond weight: 10.20cts; necklace length: 18in.; earring length: 2in.; ring size: 5 1/4 (yellow, orange, brown and green diamonds untested for origin of color)*

**\$2,500 - 3,500**  
To be sold without reserve

311

**A PERIDOT, RUBY AND DIAMOND CHAIN**

*mounted in 18k bi-color gold; estimated total diamond weight: 1.10cts; length: 44in.*

**\$2,600 - 3,200**

312

**A CULTURED PEARL AND COLORED DIAMOND RING**

*pearl approximately: 15.5mm; mounted in 18k bi-color gold; estimated total diamond weight: 2.95cts; size: 6 1/4 (yellow diamonds untested for origin of color)*

**\$2,000 - 3,000**  
To be sold without reserve

313

**A GREEN TOURMALINE AND DIAMOND RING**

*centering a cushion mixed-cut green tourmaline approximately: 19.39 x 14.77 x 12.10mm; mounted in 18k bi-color gold; estimated total diamond weight: 1.45cts; size: 6 1/2*

**\$2,200 - 2,800**

314

**A PAIR OF COLORED DIAMOND HOOP EARRINGS**

*mounted in 18k gold; total diamond weight: 6.30cts; length: 1 3/8in. (yellow diamonds untested for origin of color)*

**\$2,000 - 3,000**  
To be sold without reserve

315

**A DIAMOND PENDANT NECKLACE**

*centering an emerald-cut diamond weighing: 3.06cts; mounted in 18k gold; 14k gold chain; length: 18in.*

**\$15,000 - 20,000**

Please contact the Jewelry department for GIA report.

316

**A COLORED DIAMOND AND DIAMOND RING**

*mounted in 18k gold; estimated total diamond weight: 2.80cts; size: 6 1/2 (yellow diamonds untested for origin of color)*

**\$1,500 - 2,000**

317

**A PERIDOT LINE BRACELET**

*mounted in 18k gold; length: 7in.*

**\$2,600 - 3,200**



318

318  
**A COLORED DIAMOND AND DIAMOND RING**  
*mounted in platinum and 18k gold; estimated total diamond weight: 2.95cts; size: 5 1/2 (yellow diamonds untested for origin of color)*

**\$2,000 - 3,000**  
 To be sold without reserve

319

319  
**A COLORED SAPPHIRE AND DIAMOND RING**  
*centering a marquis brilliant-cut brown orange sapphire approximately: 12.47 x 7.36 x 4.03mm; mounted in platinum; estimated total diamond weight: 1.00ct; size: 5 1/2*

**\$2,000 - 3,000**  
 To be sold without reserve

320

320  
**A RUBY AND DIAMOND COLLAR**  
*mounted in 18k white gold; estimated total diamond weight: 6.35cts; gross weight approximately: 48 grams; length: 16in.*

**\$2,000 - 3,000**  
 To be sold without reserve

321

321  
**A DIAMOND RING**  
*centering a round brilliant-cut diamond approximately: 1.80cts; mounted in platinum; size: 6 1/2*

**\$6,000 - 8,000**





322



326



324



323



325

322

**A PAIR OF DIAMOND HEART HOOP EARRINGS**

*mounted in rhodium plated 18k white gold; length: 1 1/4in.*

**\$800 - 1,000**

**PROPERTY OF A LADY**

323

**A RUBY AND DIAMOND RING**

*centering a square cushion mixed-cut ruby measuring: 10.44 x 10.40 x 7.72mm; mounted in platinum; size: 4; with maker's marks, no. 19756*

**\$4,000 - 6,000**

Accompanied by AGL report #1099679, dated April 2, 2019, stating the ruby as: natural, Tanzanian origin, with heat enhancement.

324

**A DIAMOND FLORAL RING**

*mounted in rhodium plated 18k white gold; estimated total diamond weight: 2.70cts; size: 7 3/4*

**\$1,800 - 2,500**

325

**A RUBY ETERNITY BAND**

*mounted in 18k white gold; size: 6*

**\$1,500 - 2,000**

326

**AN INVISIBLE-SET RUBY AND DIAMOND RING WITH PENDANT EARRINGS**

*mounted in 14k and 18k white gold; estimated total diamond weight: 1.60cts; earring length: 1in.; ring size: 5 1/2*

**\$2,000 - 3,000**

**To be sold without reserve**



327

328

329

327

**A DIAMOND AND ENAMEL RING, FRENCH**

*mounted in 18k gold; estimated total diamond weight: 1.95cts; size: 6; with French assay marks*

**\$1,600 - 2,200**

328

**AN AMETHYST, CITRINE AND DIAMOND BRACELET**

*mounted in 18k white gold; estimated total diamond weight: 3.65cts; length: 7in.; width: 2in.*

**\$10,000 - 12,000**

329

**A PAIR OF CITRINE, BLACK ONYX AND DIAMOND EAR CLIPS, MARINA B.**

*mounted in 18k gold; dimensions: 5/8 x 7/8in.; signed Marina B. no. 253010, with maker's marks*

**\$1,800 - 2,500**



330



332



331



333

330

**A PAIR OF DIAMOND AND GEM-SET PENDANT EARRINGS, MARINA B.**

*mounted in 18k gold; estimated total diamond weight: 1.90cts; length: 2 1/4in.; signed Marina B. no. 244015; with maker's mark*

**\$7,500 - 9,500**

**PROPERTY OF A PRIVATE SAN FRANCISCO COLLECTOR**

332

**A CITRINE AND DIAMOND BROOCH**

*mounted in 18k gold; estimated total diamond weight: 2.20cts; dimensions: 1 3/4 x 1 1/4in.*

**\$2,000 - 3,000**

333

**A PAIR OF AMETHYST, GARNET AND DIAMOND PENDANT EARRINGS**

*mounted in 18k bi-color gold; length: 2 1/2in.*

**\$1,500 - 2,000**

331

**A DIAMOND RING, OSCAR HEYMAN & BROTHERS**

*mounted in 18k gold and platinum; estimated total diamond weight: 3.00cts; size: 8; with maker's mark, no. 11853*

**\$2,500 - 3,500**



334



336



335



337

334

**A CITRINE AND DIAMOND RING, FRED, PARIS**

*mounted in 18k gold; size: 7; signed Fred Paris, no. DA985025; with French assay and maker's marks; with signed box*

**\$2,000 - 3,000**

**To be sold without reserve**

335

**A DIAMOND HINGED BANGLE**

*mounted in 18k bi-color gold; estimated total diamond weight: 10.00cts; gross weight approximately: 59 grams; diameter: 2 3/8in.*

**\$5,000 - 7,000**

336

**A PAIR OF CHALCEDONY, PRASIOLITE AND DIAMOND DAY/NIGHT PENDANT EARRINGS**

*mounted in 18k gold; length: 2 1/2in.*

**\$1,000 - 1,500**

337

**A PAIR OF PERIDOT AND AMETHYST 'SPIGA' RINGS, BULGARI, ITALIAN**

*mounted in 18k gold and steel; size: 6 1/2; signed Bulgari*

**\$2,000 - 3,000**



338

338

**A LAVENDER JADEITE, BLACK ONYX, RUBY AND DIAMOND RING**

centering a rectangular tablet lavender jadeite measuring: 19.00 x 14.30 x 3.34mm; mounted in 18k gold; size: 6 (with sizing spring)

**\$2,000 - 3,000**  
To be sold without reserve

Accompanied by Mason Kay report #190304-2000, dated March 4, 2019, stating: Natural Jadeite Jade-No Dye or Impregnation detected-'A' Jade.

339

339

**A LAVENDER JADEITE AND DIAMOND NECKLACE AND PENDANT EARRINGS**

lavender jadeite beads approximately: 13.1 to 13.3mm; mounted in 14k gold and 18k white gold; necklace length: 18in.; earring length: 1 3/4in.

**\$2,000 - 3,000**  
To be sold without reserve

Accompanied by Mason Kay report #190326-394, dated March 26, 2019, stating: Natural Jadeite Jade-No Dye or Impregnation detected-'A' Jade.

340

340

**A CULTURED PEARL, DIAMOND, RUBY AND PLIQUE-À-JOUR ENAMEL BAT BROOCH**

pearl approximately: 16.3mm; mounted in silver-topped gold; estimated total diamond weight: 1.05cts; dimensions: 3 x 1 1/2in.

**\$2,000 - 3,000**



341

342

345

343

344

341

**A PAIR OF SAPPHIRE AND DIAMOND EAR CLIPS**

*mounted in rhodium plated 18k white gold; estimated total diamond weight: 1.30cts; length: 7/8in.; signed Andreoli*

**\$1,000 - 1,500**

342

**A TANZANITE, DIAMOND AND GOLD RING**

*centering a pear brilliant-cut tanzanite approximately: 12.07 x 8.09 x 6.53mm; mounted in gold plated 18k white gold; size: 5 1/2*

**\$2,000 - 3,000**  
To be sold without reserve

343

**A DIAMOND BRACELET**

*mounted in 18k white gold; estimated total diamond weight: 4.20cts; length: 7 1/4in.*

**\$3,000 - 5,000**

344

**A PINK TOURMALINE AND DIAMOND RING**

*mounted in rhodium plated 18k white gold; size: 6 1/2*

**\$2,000 - 3,000**  
To be sold without reserve

345

**A PURPLE SPINEL AND DIAMOND RING**

*centering an oval brilliant mixed-cut purple spinel approximately: 9.15 x 7.05 x 5.63mm; mounted in rhodium plated 14k white gold; size: 6 1/2*

**\$2,000 - 3,000**  
To be sold without reserve



346

347

348

346

**A KUNZITE AND DIAMOND RING**

centering an oval brilliant mixed-cut kunzite approximately: 16.95 x 12.62 x 9.44mm; mounted in rhodium plated 14k white gold; size: 6 1/2

**\$2,000 - 3,000**

**To be sold without reserve**

347

**A PAIR OF DIAMOND HOOP EARRINGS**

mounted in rhodium plated 18k white gold; estimated total diamond weight: 5.30cts; diameter: 1 1/2in.

**\$1,800 - 2,000**

348

**A DIAMOND NECKLACE**

mounted in 18k white gold; estimated total diamond weight: 12.00cts; gross weight approximately: 114 grams; length: 18in.

**\$8,000 - 10,000**



349

349  
**A PAIR OF COLORED DIAMOND AND DIAMOND PENDANT EARRINGS**  
*mounted in 18k white gold; estimated total diamond weight: 4.80cts; length: 2 7/8in. (brown diamonds untested for origin of color)*

**\$1,500 - 2,000**



350

350  
**A FANCY DARK GRAY-GREENISH YELLOW DIAMOND AND DIAMOND PENDANT NECKLACE**  
*centering a pear brilliant-cut Fancy Dark Gray-Greenish Yellow diamond weighing: 0.50ct; mounted in 18k white gold; estimated total remaining diamond weight: 1.00ct; chain length: 16in. pendant length: 1 3/4in.*

**\$1,800 - 2,500**



351



353

352  
**A GOLD, DIAMOND AND LEATHER BRACELET WRISTWATCH**  
*quartz movement; mounted in 18k white gold; estimated total diamond weight: 12.80cts; case diameter: 13.5mm; dimensions: 1 3/4 x 2in.; length: 9 1/2in.; case back signed swiss*

**\$6,000 - 8,000**

353  
**A PAIR OF DIAMOND PENDANT EARRINGS**  
*mounted in rhodium plated 18k gold; estimated total diamond weight: 15.00cts; length: 3in.*

**\$8,000 - 12,000**



352

Accompanied by GIA report #5111693637, dated March 01, 2010, stating the diamond as: natural Fancy Dark Gray-Greenish Yellow color "Chameleon" (copy only)

351  
**A DIAMOND AND COLORED DIAMOND RING**

*centering a round brilliant-cut diamond weighing: 4.45cts; mounted in 18k white gold; estimated total remaining diamond weight: 1.15cts; size: 6 1/2 (orange diamonds untested for origin of color)*

**\$25,000 - 35,000**





354

354

**A TANZANITE AND DIAMOND RING**

centering a pear brilliant-cut tanzanite weighing: 8.48cts; mounted in platinum; total diamond weight: 1.91cts; size: 6 1/4

**\$3,500 - 4,500**

355

355

**A COLOR CHANGE SAPPHIRE AND DIAMOND RING**

centering a cushion brilliant step-cut color change sapphire weighing: 8.10cts; mounted in platinum; size: 5 1/2

**\$12,000 - 15,000**

Accompanied by GIA report #1172956090, dated October, 27, 2016, stating the sapphire as: Natural Color-Change, violetish blue and purple color, no indications of heat enhancement.

356

**A DIAMOND LINE BRACELET**

mounted in rhodium plated 18k white gold; total diamond weight : 11.20cts; length: 7 1/4in.

**\$8,000 - 10,000**

357

**A DIAMOND NECKLACE**

centering a round brilliant-cut diamond approximately: 1.10cts; mounted in platinum; estimated total remaining diamond weight: 8.85cts; length: 15in.

**\$15,000 - 20,000**

358



358

**A PAIR OF CAMEO AND DIAMOND PENDANT EARRINGS, ATTRIBUTED TO LYDIA COURTEILLE**

mounted in 18k blackened gold; length: 2 3/4in.; with Russian assay marks; unsigned

**\$2,500 - 3,500**



359



360



361

359

**A COLLECTION OF CULTURED PEARL AND DIAMOND JEWELRY, ATTRIBUTED TO MARSH & CO.,**

pearls approximately: 5.7 to 8.7mm; mounted in steel and 18k white gold; brooch dimensions: 1 5/8 x 1 5/8in.; ear clip length: 3/4in.; ear clip length: 7/8in.; ring size: 8 1/2; unsigned

**\$2,500 - 3,500**

360

**A STAR RUBY AND DIAMOND RING**

centering an oval double cabochon star ruby weighing: 41.23cts; mounted in 18k white gold; estimated total diamond weight: 2.80cts; size: 6 1/2

**\$1,500 - 2,000**

Accompanied by GIA report #6193414656, dated June 13, 2018, stating the star ruby as: Natural, no indication of heat enhancement.

361

**A CULTURED PEARL AND DIAMOND TORSADE NECKLACE, ANGELA CUMMINGS**

pearls approximately: 2.5 to 6.0mm; mounted in 18k white gold and platinum; estimated total diamond weight: 2.40cts; length: 14 3/4in.; signed Cummings

**\$2,500 - 4,500**



363



364



362



366

365

362

**A BLUE TOURMALINE, BLUE APATITE AND DIAMOND PENDANT, RING AND PENDANT EARRINGS**

*mounted in rhodium plated 18k white gold; pendant length: 1 3/4in.; earring length: 1 3/16in.; ring size: 5 1/2*

**\$2,000 - 3,000**

**To be sold without reserve**

363

**A PAIR OF CULTURED PEARL AND DIAMOND PENDANT EARRINGS**

*centering two trillion-cut diamonds approximately: 2.25cts and 1.65cts; pearls approximately: 8.3 to 8.4mm; mounted in 18k white gold; length: 7/8in.*

**\$1,500 - 2,000**

364

**A SAPPHIRE AND DIAMOND RING**

*centering an oval brilliant-cut sapphire approximately: 11.76 x 9.41 x 5.81mm; mounted in platinum; total diamond weight: 1.81cts; size: 6*

**\$2,000 - 3,000**

365

**A DIAMOND NECKLACE**

*mounted in rhodium plated 18k white gold; estimated total diamond weight: 2.50cts; gross weight approximately: 27 grams; length: 19in.*

**\$2,500 - 3,500**

**PROPERTY OF A SOUTH AMERICAN COLLECTOR**

366

**A DIAMOND CROSS PENDANT NECKLACE**

*mounted in rhodium plated 18k gold; 18k white gold chain; estimated total diamond weight: 4.20cts (one diamond deficient); pendant dimensions: 2 1/4 x 1 1/2in.; chain length: 23in.*

**\$2,000 - 3,000**



367



368



369

**PROPERTY OF A LOS ANGELES COLLECTOR LOTS 367-385**

367

**A COLORED CULTURED PEARL AND DIAMOND BROOCH**

pearl approximately: 10.8mm; mounted in rhodium plated 18k white gold; estimated total diamond weight: 2.30cts; dimensions: 2 x 2in. (golden pearl untested for origin of color)

**\$1,000 - 1,500**

To be sold without reserve

368

**A PAIR OF DIAMOND PENDANT EARRINGS**

mounted in 18k blackened gold; estimated total diamond weight: 6.00cts; length: 3 1/2in.

**\$1,500 - 2,000**

369

**A DIAMOND BRACELET**

mounted in 18k white and blackened gold; estimated total diamond weight: 18.45cts; gross weight approximately: 123 grams; length: 7in.; width: 2 1/2in.

**\$6,000 - 8,000**



370



371



372

370

**A PINK TOURMALINE, COLORED DIAMOND AND DIAMOND BUTTERFLY BROOCH AND EAR PENDANT SET**

*mounted in 18k white and blackened gold; estimated total diamond weight: 8.00cts; brooch dimensions: 3 1/4 x 3in.; ear clip length: 2 3/4in. (brown diamonds untested for origin of color)*

**\$3,000 - 5,000**

371

**A SAPPHIRE AND DIAMOND BUTTERFLY BROOCH**

*mounted in rhodium plated 18k gold; estimated total diamond weight: 5.50cts; gross weight approximately: 27 grams; dimensions: 3 x 2 1/2in.*

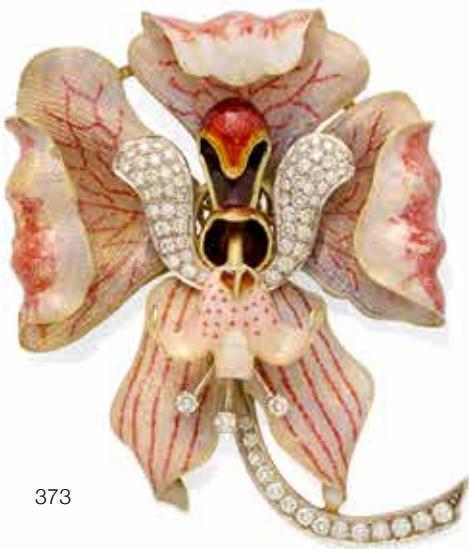
**\$3,500 - 4,500**

372

**A PAIR OF TANZANITE AND DIAMOND EAR CLIPS**

*mounted in 14k white gold; estimated total diamond weight: 1.25cts; dimensions: 7/8 x 3/4in.*

**\$1,000 - 1,500**  
To be sold without reserve



373

**373  
A DIAMOND AND ENAMEL ORCHID  
BROOCH**

*mounted in 18k bi-color gold; estimated total diamond weight: 1.75cts; dimensions: 3 x 2 1/4in.*

**\$1,800 - 2,200**



374

**374  
A PAIR OF DIAMOND AND ENAMEL EAR  
CLIPS, DAVID WEBB**

*mounted in 18k gold and platinum; estimated total diamond weight: 3.50cts; dimensions: 1 1/2 x 1 1/2in.; signed David Webb*

**\$2,500 - 3,500**



375

**375  
A PAIR OF GARNET, AMETHYST, BLACK  
ONYX AND DIAMOND PENDANT  
EARRINGS WITH A PAIR OF SAPPHIRE  
AND DIAMOND PENDANT EARRINGS**

*mounted in 18k gold; estimated total diamond weight: 3.50cts; lengths: 1 3/4in. and 2in.*

**\$1,500 - 2,000**



376



377



378



376

**A PLIQUE-À-JOUR ENAMEL, RUBY AND OPAL PENDANT/BROOCH**

*mounted in 18k gold; gross weight approximately: 33 grams; dimensions: 3 1/2 x 2 3/4in.*

**\$1,500 - 2,000**

377<sup>Y</sup>

**A CORAL AND DIAMOND NECKLACE**

*mounted in 18k; gross weight approximately: 79 grams; length: 18in.*

**\$1,800 - 2,200**

378

**A CITRINE AND GOLD BROOCH WITH A PAIR OF MABÉ PEARL EAR CLIPS, ELIZABETH LOCKE**

*pearls approximately: 3.3 to 12.4mm; mounted in 18k gold; brooch dimensions: 3 1/4 x 1 1/4in.; ear clip length: 2 1/2in.; with maker's marks for Elizabeth Locke*

**\$2,000 - 3,000**



379



380



381





382



383

379

**A PURPLE SAPPHIRE, DIAMOND AND ENAMEL FLOWER CLIP AND EAR CLIP SET**

*mounted in 18k white and blackened gold; estimated total diamond weight: 8.50cts; clip dimensions: 3 x 3in.; ear clips dimensions: 1 3/4 x 1 3/4in.*

**\$4,000 - 6,000**

380

**A RUBY, COLORED SAPPHIRE, COLORED DIAMOND AND DIAMOND FLOWER PENDANT/CLIP AND NECKLACE**

*mounted in 18k blackened gold; estimated total diamond weight: 21.80cts; necklace length: 24in.; clip dimensions: 3 1/2 x 2 1/2in. (black diamonds untested for origin of color)*

**\$4,000 - 6,000**

381

**A DIAMOND AND TITANIUM FLOWER BROOCH**

*mounted in 18k white gold and anodized titanium; estimated total diamond weight: 10.50cts; gross weight approximately: 91 grams; dimensions: 4 1/4 x 3 3/4in.*

**\$5,000 - 7,000**

382

**A SHAGREEN, DIAMOND AND AMETHYST CUFF**

*mounted in 18k white and blackened gold; estimated total diamond weight: 2.25cts; diameter: 2 1/4in.*

**\$2,000 - 3,000**

383

**A PAIR OF DIAMOND BROOCHES**

*centering two old European-cut diamonds weighing: 2.30cts and 2.75cts; mounted in silver and silver-topped gold; estimated total diamond weight: 41.25cts; dimensions: 4 x 2in.*

**\$15,000 - 20,000**



385



384



384

**A COLORED CULTURED PEARL AND DIAMOND NECKLACE**

pearls approximately: 15.0 to 17.7mm;  
mounted in 18k white gold; estimated total  
diamond weight: 23.50cts; necklace length:  
20in. (black pearls untested for origin of color)

**\$6,000 - 8,000**

385

**A COLORED CULTURED PEARL AND DIAMOND NECKLACE AND EAR CLIP SET**

pearls approximately: 14.9 to 17.5mm;  
mounted in 18k white gold; estimated total  
diamond weight: 20.50cts; necklace length:  
22in.; ear clip length: 1 3/4in. (black pearls  
untested for origin of color)

**\$10,000 - 12,000**



# Bonhams

AUCTIONEERS SINCE 1793

## Global Jewelry Auctions 2019

---

### 11 JUNE

California Jewels

### 12 JUNE

Knightsbridge Jewels

### 10 JULY

Knightsbridge Jewels

### 10 SEPTEMBER

California Jewels

### 11 SEPTEMBER

Knightsbridge Jewels

### 24 SEPTEMBER

London Jewels

### 26 SEPTEMBER

New York Jewels

### 16 OCTOBER

Knightsbridge Jewels

### 12 NOVEMBER

California Jewels



### ENQUIRIES

#### NEW YORK

+1 212 644 9046

#### LOS ANGELES

+1 323 436 5424

#### HONG KONG

+852 2918 4321

#### NEW BOND STREET, LONDON

+44 20 7468 8278

#### KNIGHTSBRIDGE, LONDON

+44 20 7393 3977

#### EDINBURGH

+44 131 240 0915

[bonhams.com/jewelry](http://bonhams.com/jewelry)

# Bonhams

AUCTIONEERS SINCE 1793



## Call to Consign California and Western Paintings & Sculpture

Los Angeles | 6 August, 2019

### INQUIRIES

Scot Levitt  
+1 (323) 436 5425  
calam.us@bonhams.com  
[bonhams.com/calwest](http://bonhams.com/calwest)

### **AUGUST GAY (1890-1948)**

*Fishing Boat Aground*  
oil on board  
11 3/4 x 14in  
Painted circa 1930.  
**\$60,000 - 80,000**

# Bonhams

AUCTIONEERS SINCE 1793



## QUAIL LODGE AUCTION

Call to Consign

Carmel, California | August 15 & 16, 2019

### INQUIRIES

+1 (415) 391 4000, West Coast

+1 (212) 461 6514, East Coast

motors.us@bonhams.com

[bonhams.com/quail](https://www.bonhams.com/quail)

### 1953 FIAT 8V SUPERSONIC

Coachwork by Ghia

## CONDITIONS OF SALE

The following Conditions of Sale, as amended by any published or posted notices or verbal announcements during the sale, constitute the entire terms and conditions on which property listed in the catalog shall be offered for sale or sold by Bonhams & Butterfields Auctioneers Corp. and any consignor of such property for whom we act as agent. If live online bidding is available for the subject auction, additional terms and conditions of sale relating to online bidding will apply; see [www.bonhams.com/](http://www.bonhams.com/) WebTerms for the supplemental terms. As used herein, "Bonhams," "we" and "us" refer to Bonhams & Butterfields Auctioneers Corp.

1. As used herein, the term "bid price" means the price at which a lot is successfully knocked down to the purchaser. The term "purchase price" means the aggregate of (a) the bid price, (b) a PREMIUM retained by us and payable by the purchaser EQUAL TO 27.5% OF THE FIRST \$3,000 OF THE BID PRICE, 25% OF THE AMOUNT OF THE BID PRICE ABOVE \$3,000 UP TO AND INCLUDING \$400,000, 20% OF THE AMOUNT OF THE BID PRICE ABOVE \$400,000 UP TO AND INCLUDING \$4,000,000, AND 13.9% OF THE AMOUNT OF THE BID PRICE OVER \$4,000,000, and (c) unless the purchaser is exempt by law from the payment thereof, any Alabama, Arizona, California, Colorado, Connecticut, Florida, Georgia, Hawaii, Idaho, Illinois, Iowa, Indiana, Kentucky, Louisiana, Maine, Massachusetts, Michigan, Minnesota, Nevada, New Jersey, New York, North Carolina, Ohio, Pennsylvania, Rhode Island, Texas, Utah, Virginia, Washington, D.C., Washington state, Wisconsin, Wyoming or other state or local sales tax (or compensating use tax) and other applicable taxes. With regard to New York sales tax, please refer to the "Sales and Use Tax" section of these Conditions of Sale.

2. On the fall of the auctioneer's hammer, the highest bidder shall have purchased the offered lot in accordance and subject to compliance with all of the conditions set forth herein and (a) assumes full risk and responsibility therefor, (b) if requested will sign a confirmation of purchase, and (c) will pay the purchase price in full or such part as we may require for all lots purchased. No lot may be transferred. Any person placing a bid as agent on behalf of another (whether or not such person has disclosed that fact or the identity of the principal) may be jointly and severally liable with the principal under any contract resulting from the acceptance of a bid.

Unless otherwise agreed, payment in good funds is due and payable within five (5) business days following the auction sale. Whenever the purchaser pays only a part of the total purchase price for one or more lots purchased, we may apply such payments, in our sole discretion, to the lot or lots we choose. Payment will not be deemed made in full until we have collected good funds for all amounts due.

Payment for purchases may be made in or by (a) cash, (b) cashier's check or money order, (c) personal check with approved credit drawn on a U.S. bank, (d) wire transfer or other immediate bank transfer, or (e) Visa, MasterCard, American Express or Discover credit, charge or debit card. A processing fee will be assessed on any returned checks. Please note that the amount of cash notes and cash equivalents that can be accepted from a given purchaser may be limited.

To the fullest extent permitted by applicable law: The purchaser grants us a security interest in the property, and we may retain as collateral security for the purchaser's obligations to us, any property and all monies held or received by us for the account of the purchaser, in our possession. We also retain all rights of a secured party under the California Commercial Code. If the foregoing conditions or any other applicable conditions herein are not complied with, in addition to all other remedies available to us and the consignor by law, we may at our election: (a) hold the purchaser liable for the full purchase price and any

late charges, collection costs, attorneys' fees and costs, expenses and incidental damages incurred by us or the consignor arising out of the purchaser's breach; (b) cancel the sale, retaining as liquidated damages all payments made by the purchaser; and/or (c) cancel the sale and/or resell the purchased property, at public auction and/or by private sale, and in such event the purchaser shall be liable for the payment of all consequential damages, including any deficiencies or monetary losses, and all costs and expenses of such sale or sales, our commissions at our standard rates, all other charges due hereunder, all late charges, collection costs, attorneys' fees and costs, expenses and incidental damages. In addition, where two or more amounts are owed in respect of different transactions by the purchaser to us, to Bonhams 1793 Limited and/or to any of our other affiliates, subsidiaries or parent companies worldwide within the Bonhams Group, we reserve the right to apply any monies paid in respect of a transaction to discharge any amount owed by the purchaser. If all fees, commissions, premiums, bid prices and other sums due to us from the purchaser are not paid promptly as provided in these Conditions of Sale, we reserve the right to impose a finance charge equal to 1.5% per month (or, if lower, the maximum nonusurious rate of interest permitted by applicable law), on all amounts due to us beginning on the 31st day following the sale until payment is received, in addition to other remedies available to us by law.

3. We reserve the right to withdraw any property and to divide and combine lots at any time before such property's auction. Unless otherwise announced by the auctioneer at the time of sale, all bids are per lot as numbered in the catalog and no lots shall be divided or combined for sale.

4. We reserve the right to reject a bid from any bidder, to split any bidding increment, and to advance the bidding in any manner the auctioneer may decide. In the event of any dispute between bidders, or in the event the auctioneer doubts the validity of any bid, the auctioneer shall have sole and final discretion either to determine the successful bidder or to re-offer and resell the article in dispute. If any dispute arises after the sale, our sales records shall be conclusive in all respects.

5. If we are prevented by fire, theft or any other reason whatsoever from delivering any property to the purchaser or a sale otherwise cannot be completed, our liability shall be limited to the sum actually paid therefor by the purchaser and shall in no event include any compensatory, incidental or consequential damages.

6. If a lot is offered subject to a reserve, we may implement such reserve by bidding on behalf of the consignor, whether by opening bidding or continuing bidding in response to other bidders until reaching the reserve. If we have an interest in an offered lot and the proceeds therefrom other than our commissions, we may bid therefor to protect such interest. **CONSIGNORS ARE NOT ALLOWED TO BID ON THEIR OWN ITEMS.**

7. All statements contained in the catalog or in any bill of sale, condition report, invoice or elsewhere as to authorship, period, culture, source, origin, measurement, quality, rarity, provenance, importance, exhibition and literature of historical relevance, or physical condition **ARE QUALIFIED STATEMENTS OF OPINION AND NOT REPRESENTATIONS OR WARRANTIES.** No employee or agent of Bonhams is authorized to make on our behalf or on that of the consignor any representation or warranty, oral or written, with respect to any property.

8. All purchased property shall be removed from the premises at which the sale is conducted by the date(s) and time(s) set forth in the "Buyer's Guide" portion of this catalog. Property designated with a "W" and associated purchased lots, if not removed promptly following sale, will be transferred to an offsite warehouse at the purchaser's

risk and expense, as set forth in more detail in the "Buyer's Guide." Purchased property that is permitted to remain onsite at Bonhams' facility should be removed at the purchaser's expense not later than 5:00 p.m. Pacific Time five (5) business days following the date of the sale. If not so removed, a storage fee of \$5.00 per lot per day will be payable to us by the purchaser beginning at the close of the 21st day following the sale, and we may thereafter transfer such property to an offsite warehouse at the purchaser's risk and expense. Accounts must be settled in full before property will be released. Packing and handling of purchased lots are the responsibility of the purchaser. Bonhams can provide packing and shipping services for certain items as noted in the "Buyer's Guide" section of the catalog.

9. The copyright in the text of the catalog and the photographs, digital images and illustrations of lots in the catalog belong to Bonhams or its licensors. You will not reproduce or permit anyone else to reproduce such text, photographs, digital images or illustrations without our prior written consent.

10. These Conditions of Sale shall bind the successors and assigns of all bidders and purchasers and inure to the benefit of our successors and assigns. No waiver, amendment or modification of the terms hereof (other than posted notices or oral announcements during the sale) shall bind us unless specifically stated in writing and signed by us. If any part of these Conditions of Sale is for any reason invalid or unenforceable, the rest shall remain valid and enforceable.

11. These Conditions of Sale and the purchaser's and our respective rights and obligations hereunder are governed by the laws of the State of California. By bidding at an auction, each purchaser and bidder agrees to be bound by these Conditions of Sale. Any dispute, controversy or claim arising out of or relating to this agreement, or the breach, termination or validity thereof, brought by or against Bonhams (but not including claims brought against the consignor by the purchaser of lots consigned hereunder) shall be resolved by the procedures set forth below.

### MEDIATION AND ARBITRATION PROCEDURES

(a) Within 30 days of written notice that there is a dispute, the parties or their authorized and empowered representatives shall meet by telephone and/or in person to mediate their differences. If the parties agree, a mutually acceptable mediator shall be selected and the parties will equally share such mediator's fees. The mediator shall be a retired judge or an attorney familiar with commercial law and trained in or qualified by experience in handling mediations. Any communications made during the mediation process shall not be admissible in any subsequent arbitration, mediation or judicial proceeding. All proceedings and any resolutions thereof shall be confidential, and the terms governing arbitration set forth in paragraph (c) below shall govern.

(b) If mediation does not resolve all disputes between the parties, or in any event no longer than 60 days after receipt of the written notice of dispute referred to above, the parties shall submit the dispute for binding arbitration before a single neutral arbitrator. Such arbitrator shall be a retired judge or an attorney familiar with commercial law and trained in or qualified by experience in handling arbitrations. Such arbitrator shall make all appropriate disclosures required by law. The arbitrator shall be drawn from a panel of a national arbitration service agreed to by the parties, and shall be selected as follows: (i) If the national arbitration service has specific rules or procedures, those rules or procedures shall be followed; (ii) If the national arbitration service does not have rules or procedures for the selection of an arbitrator, the arbitrator shall be an individual jointly agreed to by the parties. If the parties cannot agree on a national arbitration service, the arbitration shall be

## CONDITIONS OF SALE - CONTINUED

conducted by the American Arbitration Association, and the arbitrator shall be selected in accordance with the Rules of the American Arbitration Association. The arbitrator's award shall be in writing and shall set forth findings of fact and legal conclusions.

(c) Unless otherwise agreed to by the parties or provided by the published rules of the national arbitration service:

(i) the arbitration shall occur within 60 days following the selection of the arbitrator;

(ii) the arbitration shall be conducted in the designated location, as follows: (A) in any case in which the subject auction by Bonhams took place or was scheduled to take place in the State of New York or Connecticut or the Commonwealth of Massachusetts, the arbitration shall take place in New York City, New York; (B) in all other cases, the arbitration shall take place in the city of San Francisco, California; and

(iii) discovery and the procedure for the arbitration shall be as follows:

(A) All arbitration proceedings shall be confidential;

(B) The parties shall submit written briefs to the arbitrator no later than 15 days before the arbitration commences;

(C) Discovery, if any, shall be limited as follows: (I) Requests for no more than 10 categories of documents, to be provided to the requesting party within 14 days of written request therefor; (II) No more than two (2) depositions per party, provided however, the deposition(s) are to be completed within one (1) day; (III) Compliance with the above shall be enforced by the arbitrator in accordance with California law;

(D) Each party shall have no longer than eight (8) hours to present its position. The entire hearing before the arbitrator shall not take longer than three (3) consecutive days;

(E) The award shall be made in writing no more than 30 days following the end of the proceeding. Judgment upon the award rendered by the arbitrator may be entered by any court having jurisdiction thereof.

To the fullest extent permitted by law, and except as required by applicable arbitration rules, each party shall bear its own attorneys' fees and costs in connection with the proceedings and shall share equally the fees and expenses of the arbitrator.

### LIMITED RIGHT OF RESCISSION

If within one (1) year from the date of sale, the original purchaser (a) gives written notice to us alleging that the identification of Authorship (as defined below) of such lot as set forth in the **BOLD TYPE** heading of the catalog description of such lot (as amended by any saleroom notices or verbal announcements during the sale) is not substantially correct based on a fair reading of the catalog (including the terms of any glossary contained therein), and (b) within 10 days after such notice returns the lot to us in the same condition as at the time of sale, and (c) establishes the allegation in the notice to our satisfaction (including by providing one or more written opinions by recognized experts in the field, as we may reasonably require), then the sale of such lot will be rescinded and, unless we have already paid to the consignor monies owed him in connection with the sale, the original purchase price will be refunded.

If, prior to receiving such notice from the original purchaser alleging such defect, we have paid the consignor monies owed him in connection with the sale, we shall pay the original purchaser the amount of our commissions, any other sale proceeds to which we are entitled and applicable taxes received from the purchaser on the sale and make demand on the consignor to pay the balance of the original purchase price to the original purchaser. Should the consignor fail to pay such amount promptly, we may disclose the identity of the consignor and assign to the original purchaser our rights against the consignor with respect to the lot the sale of which is sought to be rescinded. Upon such disclosure and assignment, any liability of Bonhams as consignor's agent with respect to said lot shall automatically terminate.

The foregoing limited right of rescission is available to the original purchaser only and may not be assigned to or relied upon by any subsequent transferee of the property sold. The purchaser hereby accepts the benefit of the consignor's warranty of title and other representations and warranties made by the consignor for the purchaser's benefit. Nothing in this section shall be construed as an admission by us of any representation of fact, express or implied, obligation or responsibility with respect to any lot. **THE PURCHASER'S SOLE AND EXCLUSIVE**

**REMEDY AGAINST BONHAMS FOR ANY REASON WHATSOEVER IS THE LIMITED RIGHT OF RESCISSION DESCRIBED IN THIS SECTION.**

"Authorship" means only the identity of the creator, the period, culture and source or origin of the lot, as the case may be, as set forth in the **BOLD TYPE** heading of the print catalog entry. The right of rescission does not extend to: (a) works of art executed before 1870 (unless these works are determined to be counterfeits created since 1870), as this is a matter of current scholarly opinion which can change; (b) titles, descriptions, or other identification of offered lots, which information normally appears in lower case type below the **BOLD TYPE** heading identifying the Authorship; (c) Authorship of any lot where it was specifically mentioned that there exists a conflict of specialist or scholarly opinion regarding the Authorship of the lot at the time of sale; (d) Authorship of any lot which as of the date of sale was in accordance with the then generally-accepted opinion of scholars and specialists regarding the same; or (e) the identification of periods or dates of creation in catalog descriptions which may be proven inaccurate by means of scientific processes that are not generally accepted for use until after publication of the catalog in which the property is offered or that were unreasonably expensive or impractical to use at the time of such publication.

### LIMITATION OF LIABILITY

EXCEPT AS EXPRESSLY PROVIDED ABOVE, ALL PROPERTY IS SOLD "AS IS." NEITHER BONHAMS NOR THE CONSIGNOR MAKES ANY REPRESENTATION OR WARRANTY, EXPRESS OR IMPLIED, AS TO THE MERCHANTABILITY, FITNESS OR CONDITION OF THE PROPERTY OR AS TO THE CORRECTNESS OF DESCRIPTION, GENUINENESS, ATTRIBUTION, PROVENANCE OR PERIOD OF THE PROPERTY OR AS TO WHETHER THE PURCHASER ACQUIRES ANY COPYRIGHTS OR OTHER INTELLECTUAL PROPERTY RIGHTS IN LOTS SOLD OR AS TO WHETHER A WORK OF ART IS SUBJECT TO THE ARTIST'S MORAL RIGHTS OR OTHER RESIDUAL RIGHTS OF THE ARTIST. THE PURCHASER EXPRESSLY ACKNOWLEDGES AND AGREES THAT IN NO EVENT SHALL BONHAMS BE LIABLE FOR ANY DAMAGES INCLUDING, WITHOUT LIMITATION, ANY COMPENSATORY, INCIDENTAL OR CONSEQUENTIAL DAMAGES.

## SELLER'S GUIDE

### SELLING AT AUCTION

Bonhams can help you every step of the way when you are ready to sell art, antiques and collectible items at auction. Our regional offices and representatives throughout the US are available to service all of your needs. Should you have any further questions, please visit our website at [www.bonhams.com/us](http://www.bonhams.com/us) for more information or call our Client Services Department at +1 (323) 850 7500.

### AUCTION ESTIMATES

The first step in the auction process is to determine the auction value of your property. Bonhams' world-renowned specialists will evaluate your special items at no charge and in complete confidence. You can obtain an auction estimate in many ways:

- Attend one of our Auction Evaluation Events held regularly at our galleries and in other major metropolitan areas. The updated schedule for Bonhams Auction Evaluation Events is available at [www.bonhams.com/us](http://www.bonhams.com/us).
- Call our Client Services Department to schedule a private appointment at one of our galleries. If you have a large collection, our specialists can travel, by appointment, to evaluate your property on site.
- Send clear photographs to us of each individual item, including item dimensions and other pertinent information with each picture. Photos should be sent to Bonhams' address in envelopes marked

as "photo auction estimate". Alternatively, you can submit your request using our online form at [www.bonhams.com/us](http://www.bonhams.com/us). Digital images may be attached to the form. Please limit your images to no more than five (5) per item.

### CONSIGNING YOUR PROPERTY

After you receive an estimate, you may consign your property to us for sale in the next appropriate auction. Our staff assists you throughout the process, arranging transportation of your items to our galleries (at the consignor's expense), providing a detailed inventory of your consignment, and reporting the prices realized for each lot. We provide secure storage for your property in our warehouses and all items are insured throughout the auction process. You will receive payment for your property approximately 35 days after completion of sale.

Sales commissions vary with the potential auction value of the property and the particular auction in which the property is offered. Please call us for commission rates.

### PROFESSIONAL APPRAISAL SERVICES

Bonhams' specialists conduct insurance and fair market value appraisals for private collectors, corporations, museums, fiduciaries and government entities on a daily basis. Insurance appraisals, used for insurance purposes, reflect the cost of replacing property in today's retail market. Fair market value appraisals are used for estate,

tax and family division purposes and reflect prices paid by a willing buyer to a willing seller.

When we conduct a private appraisal, our specialists will prepare a thorough inventory listing of all your appraised property by category. Valuations, complete descriptions and locations of items are included in the documentation.

Appraisal fees vary according to the nature of the collection, the amount of work involved, the travel distance, and whether the property is subsequently consigned for auction.

Our appraisers are available to help you anywhere and at any time. Please call our Client Services Department to schedule an appraisal.

### ESTATE SERVICES

Since 1865, Bonhams has been serving the needs of fiduciaries – lawyers, trust officers, accountants and executors – in the disposition of large and small estates. Our services are specially designed to aid in the efficient appraisal and disposition of fine art, antiques, jewelry, and collectibles. We offer a full range of estate services, ranging from flexible financial terms to tailored accounting for heirs and their agents to world-class marketing and sales support.

For more information or to obtain a detailed Trust and Estates package, please visit our website at [www.bonhams.com/us](http://www.bonhams.com/us) or contact our Client Services Department.



# BUYER'S GUIDE

## BIDDING & BUYING AT AUCTION

Whether you are an experienced bidder or an enthusiastic novice, auctions provide a stimulating atmosphere unlike any other. Bonhams previews and sales are free and open to the public. As you will find in these directions, bidding and buying at auction is easy and exciting. Should you have any further questions, please visit our website at [www.bonhams.com](http://www.bonhams.com) or call our Client Services Department at +1 (323) 850 7500.

### Catalogs

Before each auction we publish illustrated catalogs that include dates and times for previews and auctions. Our catalogs also provide descriptions and estimated values for each "lot." A lot may refer to a single item or to a group of items auctioned together. We offer our catalogs by subscription or by single copy. For information on subscribing to our catalogs, you may refer to the subscription form in this catalog, call our Client Services Department, or visit our website at [www.bonhams.com/us](http://www.bonhams.com/us).

### Previews

Auction previews are your chance to inspect each lot prior to the auction. We encourage you to look closely and examine each object on which you may want to bid so that you will know as much as possible about it. Items are sold "as is" and with all faults; illustrations in our catalogs, website and other materials are provided for identification only. At the previews, our staff is always available to answer your questions and guide you through the auction process. Condition reports may be available upon request.

### Estimates

Bonhams catalogs include estimates for each lot, exclusive of buyer's premium and tax. The estimates are provided as an approximate guide to current market value and should not be interpreted as a representation or prediction of actual selling prices. They are determined well in advance of a sale and are subject to revision. Please contact us should you have any questions about value estimates.

### Reserves

All lots in a catalog are subject to a reserve unless otherwise indicated. The reserve is the minimum price that the seller is willing to accept for a lot. This amount is confidential and does not exceed the low estimated value.

## BIDDING AT AUCTION

At Bonhams, you can bid in many ways: in person, via absentee bid, over the phone, or via Bonhams' online bidding facility. Absentee bids can be submitted in person, online, via fax or via email.

A valid Bonhams client account is required to participate in bidding activity. You can obtain registration information online, at the reception desk or by calling our Client Services Department.

By bidding at auction, whether in person or by agent, by absentee bid, telephone, online or other means, the buyer or bidder agrees to be bound by the Conditions of Sale.

Lots are auctioned in consecutive numerical order as they appear in the catalog. Bidding normally begins below the low estimate. The auctioneer will accept bids from interested parties present in the saleroom, from telephone bidders, and from absentee bidders who have left written bids in advance of the sale. The auctioneer may also execute bids on behalf of the consignor up to the amount of the reserve, but never above it.

We assume no responsibility for failure to execute bids for any reason whatsoever.

### In Person

If you are planning to bid at auction, you will need to register at the reception desk in order to receive a numbered bid card. To place a bid, hold up your card so that the auctioneer can clearly see it. Decide on the maximum amount that you wish to pay, exclusive of buyer's premium and tax, and continue bidding until your bid prevails or you reach your limit. If you are the successful bidder on a lot, the auctioneer will acknowledge your paddle number and bid amount.

### Absentee Bids

As a service to those wishing to place bids, we may at our discretion accept bids without charge in advance of sale by telephone, by facsimile or in writing on bidding forms available from us. "Buy" bids will not be accepted; all bids must state the highest bid price the bidder is willing to pay. Our auction staff will try to bid just as you would, with the goal of obtaining the

item at the lowest bid price possible. In the event identical bids are submitted, the earliest bid submitted will take precedence. Absentee bids shall be executed in competition with other absentee bids, any applicable reserve, and bids from other auction participants. A friend or agent may place bids on your behalf, provided that we have received your written authorization prior to the sale. Absentee bid forms are available in our catalogs, online at [www.bonhams.com/us](http://www.bonhams.com/us), and at our San Francisco, Los Angeles and New York galleries.

### By Telephone

Under special circumstances, we can arrange for you to bid by telephone. To arrange for a telephone bid, please contact our Client Services Department a minimum of 24 hours prior to the sale.

### Online

Web users may place absentee bids online from anywhere in the world. To bid online, please visit our website at [www.bonhams.com/us](http://www.bonhams.com/us).

We are pleased to make our live online bidding facility available to bidders in this sale.

Additional terms and conditions of sale relating to online bidding will apply. Please see [www.bonhams.com/25330](http://www.bonhams.com/25330) or contact the Client Services Department to obtain information and learn how you can register and bid online in this sale.

### Bid Increments

Bonhams generally uses the following increment multiples as bidding progresses:

\$50-200 .....	by \$10s
\$200-500 .....	by \$20/50/80s
\$500-1,000 .....	by \$50s
\$1,000-2,000 .....	by \$100s
\$2,000-5,000 .....	by \$200/500/800s
\$5,000-10,000 .....	by \$500s
\$10,000-20,000 .....	by \$1,000s
\$20,000-50,000 .....	by \$2,000/5,000/8,000s
\$50,000-100,000 .....	by \$5,000s
\$100,000-200,000 .....	by \$10,000s
above \$200,000 .....	at auctioneer's discretion

**The auctioneer may split or reject any bid at any time at his or her discretion as outlined in the Conditions of Sale.**

### Currency Converter

Solely for the convenience of bidders, a currency converter may be provided at Bonhams sales. The rates quoted for conversion of other currencies to U.S. Dollars are indications only and should not be relied upon by a bidder, and neither Bonhams nor its agents shall be responsible for any errors or omissions in the operation or accuracy of the currency converter.

### Buyer's Premium

A buyer's premium is added to the winning bid price of each individual lot purchased, at the rates set forth in the Conditions of Sale. The winning bid price plus the premium constitute the purchase price for the lot. Applicable sales taxes are computed based on this figure, and the total becomes your final purchase price.

Unless specifically illustrated and noted, fine art frames are not included in the estimate or purchase price. Bonhams accepts no liability for damage or loss to frames during storage or shipment.

All sales are final and subject to the Conditions of Sale found in our catalogs, on our website, and available at the reception desk.

### Payment

All buyers are asked to pay and pick up by 3pm on the business day following the auction. Payment may be made to Bonhams by cash, checks drawn on a U.S. bank, money order, wire transfer, or by Visa, MasterCard, American Express or Discover credit or charge card or debit card. All items must be paid for within 5 business days of the sale. Please note that payment by personal or business check may result in property not being released until purchase funds clear our bank.

### Sales Tax

Residents of states listed in Paragraph 1 of the Conditions of Sale must pay applicable sales tax. Other state or local taxes (or compensation use taxes) may apply. Sales tax will be automatically added to the invoice unless a valid resale number has been furnished or the property is shipped via common carrier to destinations outside the states listed in

the Conditions of Sale. If you wish to use your resale license please contact Cashiers for our form.

### Shipping & Removal

Bonhams can accommodate shipping for certain items. Please contact our Cashiers Department for more information or to obtain a quote. Refer to Conditions of Sale for special terms governing the shipment of Arms and Wine. Shipments are made during weekday business hours up to four weeks after payment is received. Carriers are not permitted to deliver to P.O. Boxes.

International buyers are responsible for all import/export customs duties and taxes. An invoice stating the actual purchase price(s) will accompany all international purchases.

### Simultaneous sale property collection notice:

If this sale previews in multiple cities, please see the title page for details regarding final location of property for collection.

### Auction Results

Auction results are usually available on the next business day following the sale or online at [www.bonhams.com/us](http://www.bonhams.com/us).

# Bonhams Specialist Departments

---

## 19th Century Paintings

London  
Charles O' Brien  
+44 20 7468 8360  
New York  
Madalina Lazen  
+1 212 644 9108

## 20th Century British Art

London  
Matthew Bradbury  
+44 20 7468 8295

## 20th Century Fine Art

San Francisco  
Sonja Moro  
+1 415 694 9002

## Aboriginal Art

Australia  
Francesca Cavazzini  
+61 2 8412 2222

## African, Oceanic & Pre-Columbian Art

Los Angeles  
Fredric W. Backlar  
+1 323 436 5416 •

## American Paintings

New York  
Jennifer Jacobsen  
+1 917 206 1699

## Antiquities

London  
Francesca Hickin  
+44 20 7468 8226

## Antique Arms & Armour

London  
David Williams  
+44 20 7393 3807

## Art Collections, Estates & Valuations

London  
Harvey Cammell  
+44 (0) 20 7468 8340  
New York  
Sherri Cohen  
+1 917 206 1671  
Los Angeles  
Leslie Wright  
+1 323 436 5408  
Joseph Francaviglia  
+1 323 436 5443  
Lydia Ganley  
+1 323 436 4496  
San Francisco  
Victoria Richardson  
+1 415 503 3207  
Celeste Smith  
+1 415 503 3214

## Australian Art

Australia  
Merryn Schriever  
+61 2 8412 2222 Alex Clark  
+61 3 8640 4088

## Australian Colonial Furniture and Australiana

+61 2 8412 2222

## Books, Maps & Manuscripts

London  
Matthew Haley  
+44 20 7393 3817  
New York  
Ian Ehling  
+1 212 644 9094 Darren Sutherland  
+1 212 461 6531

## Los Angeles

Catherine Williamson  
+1 323 436 5442

## San Francisco

Adam Stackhouse  
+1 415 503 3266

## British & European Glass

London  
John Sandon  
+44 20 7468 8244

## British Ceramics

London  
John Sandon  
+44 20 7468 8244

## California & Western Paintings & Sculpture

Los Angeles  
Scot Levitt  
+1 323 436 5425  
Kathy Wong  
+1 323 436 5415  
San Francisco  
Aaron Bastian  
+1 415 503 3241

## Carpets

London  
Helena Gumley-Mason  
+44 20 8393 2615

## Chinese & Asian Art

London  
Asaph Hyman  
+44 20 7468 5888  
Rosangela Assennato  
+44 20 7393 3883  
Edinburgh  
Ian Glennie  
+44 131 240 2299  
New York  
Bruce MacLaren  
+1 917 206 1677  
Los Angeles  
Rachel Du  
+1 323 436 5587  
San Francisco  
Dessa Goddard  
+1 415 503 3333  
Hong Kong  
Xibo Wang  
+852 3607 0010  
Sydney  
Yvett Klein  
+61 2 8412 2231

## Chinese Paintings

Hong Kong  
Iris Miao,  
+852 3607 0011

## Clocks

London  
James Stratton  
+44 20 7468 8364  
New York  
Jonathan Snellenburg  
+1 212 461 6530

## Coins & Medals

London  
John Millensted  
+44 20 7393 3914  
Los Angeles  
Paul Song  
+1 323 436 5455

## Entertainment Memorabilia

London  
Katherine Schofield  
+44 20 7393 3871  
Los Angeles  
Catherine Williamson  
+1 323 436 5442  
Dana Hawkes  
+1 978 283 1518

## European Ceramics

London  
Sebastian Kuhn  
+44 20 7468 8384

## European Paintings

London  
Charles O' Brien  
+44 20 7468 8360  
New York  
Madalina Lazen  
+1 212 644 9108  
Los Angeles  
Mark Fisher  
+1 323 436 5488  
Rocco Rich  
+1 323 436 5410

## European Sculptures & Works of Art

London  
Michael Lake  
+44 20 8963 6813

## Furniture and Decorative Art

London  
Thomas Moore  
+44 20 8963 2816  
Los Angeles  
Angela Past  
+1 323 436 5422  
Anna Hicks  
+1 323 436 5463  
San Francisco  
Jeffrey Smith  
+1 415 215 7385

## Greek Art

London  
Anastasia Orfanidou  
+44 20 7468 8356

## Golf Sporting Memorabilia

Edinburgh  
Kevin McGimpsey  
+44 131 240 2296  
Hamish Wilson  
+44 131 240 0916

## Irish Art

London  
Penny Day  
+44 20 7468 8366

## Impressionist & Modern Art

London  
India Phillips  
+44 20 7468 8328  
New York  
Caitlyn Pickens  
+1 212 644 9135  
Los Angeles  
Kathy Wong  
+1 323 436 5415

## Indian, Himalayan & Southeast Asian Art

New York  
Mark Rasmussen  
+1 917 206 1688  
Hong Kong  
Edward Wilkinson  
+852 2918 4321

## Islamic & Indian Art

London  
Oliver White  
+44 20 7468 8303

## Japanese Art

London  
Suzannah Yip  
+44 20 7468 8368  
New York  
Jeff Olson  
+1 212 461 6516

## Jewellery

London  
Jean Ghika  
+44 20 7468 8282  
Emily Barber  
+44 20 7468 8284  
New York  
Brett O'Connor  
+1 212 461 6525  
Caroline Morrissey  
+1 212 644 9046  
Camille Barbier  
+1 212 644 9035  
Los Angeles  
Emily Waterfall  
+1 323 436 5426  
San Francisco  
Shannon Beck  
+1 415 503 3306  
Hong Kong  
Paul Redmayne  
+852 3607 0006

## Marine Art

London  
Veronique Scorer  
+44 20 7393 3962

**Mechanical Music**

London  
Jon Baddeley  
+44 20 7393 3872

**Modern & Contemporary  
African Art**

London  
Giles Peppiatt  
+ 44 20 7468 8355  
New York  
Hayley Grundy  
+1 917 206 1624

**Modern & Contemporary  
Middle Eastern Art**

London  
Nima Sagharchi  
+44 20 7468 8342

**Modern & Contemporary  
South Asian Art**

London  
Tahmina Ghaffar  
+44 207 468 8382

**Modern Decorative  
Art + Design**

London  
Mark Oliver  
+44 20 7393 3856  
New York  
Benjamin Walker  
+1 212 710 1306  
Dan Tolson  
+1 917 206 1611  
Los Angeles  
Jason Stein  
+1 323 436 5466

**Motor Cars**

London  
Tim Schofield  
+44 20 7468 5804  
New York  
Rupert Banner  
+1 212 461 6515  
Eric Minoff  
1 917 206 1630  
Evan Ide  
+1 917 340 4657  
Los Angeles  
Jakob Greisen  
+1 415 503 3284  
Michael Caimano  
+1 929 666 2243  
San Francisco  
Mark Osborne  
+1 415 503 3353  
Europe  
Phillip Kantor  
+32 476 879 471

**Automobilia**

London  
Toby Wilson  
+44 20 8963 2842  
Adrian Pipiros  
+44 20 8963 2840

**Motorcycles**

London  
Ben Walker  
+44 20 8963 2819  
James Stensel  
+44 20 8963 2818  
Los Angeles  
Craig Mallery  
+1 323 436 5470

**Museum Services**

San Francisco  
Laura King Pfaff  
+1 415 503 3210

**Native American Art**

San Francisco  
Ingmars Lindbergs  
+1 415 503 3393

**Natural History**

Los Angeles  
Claudia Florian  
+1 323 436 5437  
Thomas E. Lindgren  
+1 310 469 8567 •

**Old Master Pictures**

London  
Andrew Mckenzie  
+44 20 7468 8261  
Los Angeles  
Mark Fisher  
+1 323 436 5488

**Orientalist Art**

London  
Charles O'Brien  
+44 20 7468 8360

**Photography**

New York  
Laura Paterson  
+1 917 206 1653  
Los Angeles & San Francisco  
Morisa Rosenberg  
+1 323 436 5435  
+1 415 503 3259

**Post-War and  
Contemporary Art**

London  
Ralph Taylor  
+44 20 7447 7403  
New York  
Muys Sniijders,  
+212 644 9020  
Jacqueline Towers-Perkins,  
+1 212 644 9039  
Lisa De Simone,  
+1 917 206 1607  
Los Angeles  
Sharon Squires  
+1 323 436 5404  
Laura Bjorstad  
+1 323 436 5446

**Prints and Multiples**

London  
Lucia Tro Santafe  
+44 20 7468 8262  
New York  
Deborah Ripley  
+1 212 644 9059  
Los Angeles  
Morisa Rosenberg  
+1 323 447 9374

**Russian Art**

London  
Daria Khristova  
+44 20 7468 8334  
New York  
Yelena Harbick  
+1 212 644 9136

**Scientific Instruments**

London  
Jon Baddeley  
+44 20 7393 3872  
New York  
Jonathan Snellenburg  
+1 212 461 6530

**Scottish Pictures**

Edinburgh  
Chris Brickley  
+44 131 240 2297

**Silver & Gold Boxes**

London  
Ellis Finch  
+44 20 7393 3973

**Sporting Guns**

London  
Patrick Hawes  
+44 20 7393 3815

**Space History**

San Francisco  
Adam Stackhouse  
+1 415 503 3266

**Travel Pictures**

London  
Veronique Scorer  
+44 20 7393 3962

**Watches &  
Wristwatches**

London  
Jonathan Darracott  
+44 20 7447 7412  
New York  
Jonathan Snellenburg  
+1 212 461 6530  
Hong Kong  
Tim Bourne  
+852 3607 0021

**Whisky**

Edinburgh  
Martin Green  
+44 131 225 2266  
Hong Kong  
Daniel Lam  
+852 2918 4321

**Wine**

London  
Richard Harvey  
+44 20 7468 5811  
San Francisco  
Christine Ballard  
+1 415 503 3221  
Hong Kong  
Daniel Lam  
+852 2918 4321

**Client Services Departments****U.S.A.****San Francisco**

(415) 861 7500  
(415) 861 8951 fax  
Monday - Friday, 9am to 5pm

**Los Angeles**

(323) 850 7500  
(323) 850 6090 fax  
Monday - Friday, 9am to 5pm

**New York**

(212) 644 9001  
(212) 644 9009 fax  
Monday - Friday, 9am to 5pm

**Toll Free**

(800) 223 2854

**U.K.**

Monday to Friday 8.30 to 6.00 +44  
(0) 20 7447 7447

**Bids**

+44 (0) 20 7447 7447  
+44 (0) 20 7447 7401 fax  
To bid via the internet please visit  
bonhams.com

• Indicates independent contractor

# Bonhams Global Network

---

## International Salerooms

### London

101 New Bond Street  
London W1S 1SR  
+44 20 7447 7447  
+44 20 7447 7400 fax

### New York

580 Madison Avenue  
New York, NY  
10022  
+1 (212) 644 9001  
+1 (212) 644 9007 fax

### Hong Kong

Suite 2001  
One Pacific Place  
88 Queensway  
Admiralty  
Hong Kong  
+852 2918 4321  
+852 2918 4320 fax

### London

Montpelier Street London  
SW7 1HH  
+44 20 7393 3900  
+44 20 7393 3905 fax

---

## Offices and Associated Companies

### AFRICA

#### Nigeria

Neil Coventry  
+234 (0)8110 033 792  
+27 (0)7611 20171  
neil.coventry@bonhams.com

#### South Africa - Johannesburg

Penny Culverwell  
+27 (0)71 342 2670  
penny.culverwell@bonhams.com

### AUSTRALIA

#### Sydney

97-99 Queen Street,  
Woollahra, NSW 2025  
Australia  
+61 (0) 2 8412 2222  
+61 (0) 2 9475 4110 fax  
info.aus@bonhams.com

#### Melbourne

Como House  
Como Avenue  
South Yarra  
Melbourne VIC 3141  
Australia  
+61 (0) 3 8640 4088  
+61 (0) 2 9475 4110 fax  
info.aus@bonhams.com

### ASIA

#### Beijing

Vivian Zhang  
Unit S102A, Beijing  
Lufthansa Center,  
50 Liangmaqiao Road,  
Chaoyang District,  
Beijing 100125, China  
+86 (0) 10 8424 3188  
beijing@bonhams.com

#### Singapore

Bernadette Rankine  
11th Floor, Wisma Atria  
435 Orchard Road  
Singapore 238877  
+65 (0) 6701 8038  
+65 (0) 6701 8001 fax  
bernadette.rankine@bonhams.com

#### Taiwan

Jenny Tsai  
37th Floor, Taipei 101  
Tower  
No. 7 Xinyi Road,  
Section 5  
Taipei, 100  
+886 2 8758 2898  
+886 2 8758 2897 fax  
taiwan@bonhams.com

### EUROPE

#### Austria

Thomas Kamm  
+49 (0) 89 2420 5812  
austria@bonhams.com

#### Belgium

Boulevard  
Saint-Michel 101  
1040 Brussels  
+32 (0) 2 736 5076  
belgium@bonhams.com

#### France

4 rue de la Paix  
75002 Paris  
+33 (0) 1 42 61 10 10  
paris@bonhams.com

#### Germany - Cologne

Katharina Schmid  
+49 (0) 221 9865 3419  
+49 (0) 157 9234 6717  
cologne@bonhams.com

#### Germany - Hamburg

Marie Becker Lingenthal  
+49 (0) 17 4236 0022  
hamburg@bonhams.com

#### Germany - Munich

Maximilianstrasse 52  
80538 Munich  
+49 (0) 89 2420 5812  
munich@bonhams.com

#### Germany - Stuttgart

Neue Brücke 2  
New Bridge Offices  
70173 Stuttgart  
+49 (0) 711 2195 2640  
+49 (0) 157 9234 6717  
stuttgart@bonhams.com

#### Greece

7 Neofytou Vamva  
Street  
Athens 10674  
+30 (0) 210 3636 404  
athens@bonhams.com

#### Ireland

31 Molesworth Street  
Dublin 2  
+353 (0) 1 602 0990  
ireland@bonhams.com

#### Italy - Milan

Via Boccaccio 22  
20123 Milano  
+39 0 2 4953 9020  
milan@bonhams.com

#### Italy - Rome

Via Sicilia 50  
00187 Roma  
+39 06 485 900  
rome@bonhams.com

#### The Netherlands

De Lairessestraat 154  
1075 HL Amsterdam  
+31 (0) 20 67 09 701  
amsterdam@bonhams.com

#### Portugal

Rua Bartolomeu Dias  
nº160. 1º  
Belem  
1400-031 Lisbon  
+351 218 293 291  
portugal@bonhams.com

#### Spain - Barcelona

Teresa Ybarra  
+34 930 156 686  
+34 680 347 606  
barcelona@bonhams.com

#### Spain - Madrid

Núñez de Balboa no  
4-1C  
28001 Madrid  
+34 915 78 17 27  
madrid@bonhams.com

#### Switzerland - Geneva

Rue Etienne-Dumont 10  
1204 Geneva  
+41 (0) 22 300 3160  
geneva@bonhams.com

#### Switzerland - Zurich

Andrea Bodmer  
Dreikönigstrasse 31a  
8002 Zürich  
+41 44 281 9535  
zurich@bonhams.com

### NORTH AMERICA

#### USA

Representatives:  
**Arizona**  
Terri Adrian-Hardy  
+1 (602) 859 1843  
arizona@bonhams.com

#### California Central Valley

David Daniel  
+1 (916) 364 1645  
sacramento@bonhams.com

#### California Palm Springs

Brooke Sivo  
+1 (760) 350 4255  
palmsprings@bonhams.com

#### California San Diego

Brooke Sivo  
+1 (760) 567 1744  
sandiego@bonhams.com

#### Colorado

Lance Vigil  
+1 (720) 355 3737  
colorado@bonhams.com

#### Florida

April Matteini  
+1 (305) 978 2459  
Miami@bonhams.com  
Alexis Butler  
+1 (305) 878 5366  
Miami@bonhams.com

#### Georgia

Mary Moore Bethea  
+1 (404) 842 1500  
georgia@bonhams.com

#### Illinois & Midwest

Natalie B. Waechter  
+1 (773) 267 3300  
Shawn Marsh  
+1 (773) 680 2881  
chicago@bonhams.com

---

**Edinburgh**

22 Queen Street  
Edinburgh  
EH2 1JX  
+44 131 225 2266  
+44 131 220 2547 fax

**Los Angeles**

7601 W. Sunset Boulevard  
Los Angeles  
CA 90046  
+1 (323) 850 7500  
+1 (323) 850 6090 fax

**San Francisco**

220 San Bruno Avenue  
San Francisco  
CA 94103  
+1 (415) 861 7500  
+1 (415) 861 8951 fax

---

**Massachusetts**

Amy Corcoran  
+1 (617) 742 0909  
boston@bonhams.com

**Nevada**

David Daniel  
+1 (775) 831 0330  
nevada@bonhams.com

**New Mexico**

Terri Adrian-Hardy  
+1 (602) 859 1843  
newmexico@bonhams.com

**Oregon**

Sheryl Acheson  
+1 (971) 727 7797  
oregon@bonhams.com

**Texas – Dallas**

Mary Holm  
+1 (214) 557 2716  
dallas@bonhams.com

**Texas – Houston**

Lindsay Davis  
+1 (713) 855 7452  
texas@bonhams.com

**Virginia**

Gertraud Hechl  
+1 (202) 422 2733  
virginia@bonhams.com

**Washington**

Heather O'Mahony  
+1 (206) 566 3913  
seattle@bonhams.com

**Washington DC  
Mid-Atlantic Region**

Gertraud Hechl  
+1 (202) 422 2733  
washingtonDC@bonhams.com

**Canada****Toronto, Ontario**

Kristin Kearney  
340 King St East  
2nd Floor, Office 213  
Toronto ON  
M5A 1K8  
+1 (416) 462 9004  
info.ca@bonhams.com

**Montreal, Quebec**

+1 (514) 209 2377  
info.ca@bonhams.com

**MIDDLE EAST****Israel**

Joslyne Halibard  
+972 (0)54 553 5337  
joslyne.halibard@bonhams.com

**SOUTH AMERICA****Brazil**

+55 11 3031 4444  
+55 11 3031 4444  
fax

**UNITED KINGDOM****South East  
England****Guildford**

Millmead,  
Guildford,  
Surrey GU2 4BE  
+44 1483 504 030  
+44 1483 450 205  
fax

**Isle of Wight**

+44 1273 220 000

Representative:

**Brighton & Hove**

Tim Squire-Sanders  
+44 1273 220 000

**West Sussex**

+44 (0) 1273 220 000

**South West  
England****Bath**

Queen Square House  
Charlotte Street  
Bath BA1 2LL  
+44 1225 788 988  
+44 1225 446 675  
fax

**Cornwall – Truro**

36 Lemon Street  
Truro  
Cornwall  
TR1 2NR  
+44 1872 250 170  
+44 1872 250 179  
fax

**Exeter**

The Lodge  
Southernhay West  
Exeter, Devon  
EX1 1JG  
+44 1392 425 264  
+44 1392 494 561  
fax

**Tetbury**

Eight Bells House  
14 Church Street  
Tetbury  
Gloucestershire  
GL8 8JG  
+44 1666 502 200  
+44 1666 505 107  
fax

Representatives:

**Dorset**

Matthew Lacey  
+44 1935 815 271

**East Anglia and  
Bury St. Edmunds**

Michael Steel  
+44 1284 716 190

**Norfolk**

The Market Place  
Reepham  
Norfolk NR10 4JJ  
+44 1603 871 443  
+44 1603 872 973  
fax

**Midlands****Knowle**

The Old House  
Station Road  
Knowle, Solihull  
West Midlands  
B93 0HT  
+44 1564 776 151  
+44 1564 778 069  
fax

**Oxford**

Banbury Road  
Shipton on Cherwell  
Kidlington OX5 1JH  
+44 1865 853 640  
+44 1865 372 722  
fax

**Yorkshire & North  
East England****Leeds**

The West Wing  
Bowcliffe Hall  
Bramham  
Leeds  
LS23 6LP  
+44 113 234 5755  
+44 113 244 3910  
fax

**North West England****Chester**

2 St Johns Court,  
Vicars Lane,  
Chester,  
CH1 1QE  
+44 1244 313 936  
+44 1244 340 028  
fax

**Manchester**

The Stables  
213 Ashley Road  
Hale WA15 9TB  
+44 161 927 3822  
+44 161 927 3824  
fax

**Channel Islands****Jersey**

La Chasse  
La Rue de la Vallee  
St Mary  
Jersey JE3 3DL  
+44 1534 722 441  
+44 1534 759 354  
fax

Representative:

**Guernsey**

+44 1481 722 448

**Scotland****Bonhams West  
of Scotland**

Kirkhill House  
Broom Road East  
Newton Mearns  
Glasgow  
G77 5LL  
+44 141 223 8866

**Wales**

Representatives:

**Cardiff**

Jeff Muse  
+44 2920 727 980

# Auction Registration Form

(Attendee / Absentee / Online / Telephone Bidding)  
Please circle your bidding method above.

--	--	--	--

**Paddle number (for office use only)**

**General Notice:** This sale will be conducted in accordance with Bonhams Conditions of Sale, and your bidding and buying at the sale will be governed by such terms and conditions. Please read the Conditions of Sale in conjunction with the Buyer's Guide relating to this sale and other published notices and terms relating to bidding. Payment by personal or business check may result in your property not being released until purchase funds clear our bank. Checks must be drawn on a U.S. bank.

**Notice to Absentee Bidders:** In the table below, please provide details of the lots on which you wish to place bids at least 24 hours prior to the sale. Bids will be rounded down to the nearest increment. Please refer to the Buyer's Guide in the catalog for further information relating to instructions to Bonhams to execute absentee bids on your behalf. Bonhams will endeavor to execute bids on your behalf but will not be liable for any errors or non-executed bids.

**Notice to First Time Bidders:** New clients are requested to provide photographic proof of ID - passport, driving license, ID card, together with proof of address - utility bill, bank or credit card statement etc. Corporate clients should also provide a copy of their articles of association / company registration documents, together with a letter authorizing the individual to bid on the company's behalf. Failure to provide this may result in your bids not being processed. For higher value lots you may also be asked to provide a bankers reference.

**Notice to online bidders;** If you have forgotten your username and password for [www.bonhams.com](http://www.bonhams.com), please contact Client Services.

**If successful**

- I will collect the purchases myself
- Please contact me with a shipping quote (if applicable)
- I will arrange a third party to collect my purchase(s)

**Please email or fax the completed Registration Form and requested information to:**

Bonhams Client Services Department  
7601 W. Sunset Blvd  
Los Angeles, California 90046  
Tel +1 (323) 850 7500  
Fax +1 (323) 850 6090  
bids.us@bonhams.com

# Bonhams

Sale title: California Jewels		Sale date: Tuesday June 11, 2019	
Sale no. 25330		Sale venue: Los Angeles	
<b>General Bid Increments:</b>			
\$10 - 200 .....by 10s		\$10,000 - 20,000 .....by 1,000s	
\$200 - 500 .....by 20 / 50 / 80s		\$20,000 - 50,000 .....by 2,000 / 5,000 / 8,000s	
\$500 - 1,000 .....by 50s		\$50,000 - 100,000 .....by 5,000s	
\$1,000 - 2,000 .....by 100s		\$100,000 - 200,000 .....by 10,000s	
\$2,000 - 5,000 .....by 200 / 500 / 800s		above \$200,000 .....at the auctioneer's discretion	
\$5,000 - 10,000 .....by 500s		The auctioneer has discretion to split any bid at any time.	
Customer Number		Title	
First Name		Last Name	
Company name (to be invoiced if applicable)			
Address			
City		County / State	
Post / Zip code		Country	
Telephone mobile		Telephone daytime	
Telephone evening		Fax	
Telephone bidders: indicate primary and secondary contact numbers by writing ① or ② next to the telephone number.			
E-mail (in capitals) _____			
By providing your email address above, you authorize Bonhams to send you marketing materials and news concerning Bonhams and partner organizations. Bonhams does not sell or trade email addresses.			
I am registering to bid as a private client <input type="checkbox"/>		I am registering to bid as a trade client <input type="checkbox"/>	
Resale: please enter your resale license number here _____ We may contact you for additional information.			

SHIPPING	
Shipping Address (if different than above):	
Address: _____	Country: _____
City: _____	Post/ZIP code: _____

**Please note that all telephone calls are recorded.**

Type of bid (A-Absentee, T-Telephone)	Lot no.	Brief description (In the event of any discrepancy, lot number and not lot description will govern.) If you are bidding online there is no need to complete this section.	MAX bid in US\$ (excluding premium and applicable tax) Emergency bid for telephone bidders only*

**You instruct us to execute each absentee bid up to the corresponding bid amount indicated above.**

\* Emergency Bid: A maximum bid (exclusive of Buyer's Premium and tax) to be executed by Bonhams only if we are unable to contact you by telephone or should the connection be lost during bidding.

BY SIGNING THIS FORM YOU AGREE THAT YOU HAVE READ AND UNDERSTAND OUR CONDITIONS OF SALE AND SHALL BE LEGALLY BOUND BY THEM, AND YOU AGREE TO PAY THE BUYER'S PREMIUM, ANY APPLICABLE TAXES, AND ANY OTHER CHARGES MENTIONED IN THE BUYER'S GUIDE OR CONDITIONS OF SALE. THIS AFFECTS YOUR LEGAL RIGHTS.	
Your signature: _____	Date: _____





**Bonhams**  
7601 W. Sunset Boulevard  
Los Angeles, California 90046

---

+1 323 850 7500  
bonhams.com

**AUCTIONEERS SINCE 1793**